

VariZoom USA

Lens Controls



www.Varizoom.com

VariZoom has been a leading manufacturer in film and production tools for over two decades. Based and made in the USA is at the core of our commitment to quality. From our full line of Lens Controls to our state of the art motion control systems, and all points in between, VariZoom continues to innovate and bring you the production tools you can afford.

Table of Contents

Canon Lens Controls	4
Fujinon Lens Controls	10
JVC Lens Controls.	17
Panasonic Lens Controls	18
Sony Lens Controls	22
Wireless Cinema/Broadcast	29
Accessories for Wireless Cinema/Broadcast	30
Remote Focus Controls for Broadcast/DSLR Lenses . . .	31
Accessories	32
Converter Cables & Straps	33
Extension Cables	34

Canon Lens Controls

VZROCKC 8-pin Canon Zoom Control



The VZROCKC Canon Zoom Control is our solution for the videographer who needs a very compact, lightweight Canon zoom control. With its high-sensitivity rocker and speed limiter knob, precise repeatable zooms are easily achieved. Perfect for stabilizers and jibs.

- Pair with any Canon Focus Control for \$50 Kit Savings
- Pressure-sensitive zoom rocker and limiter knob for setting maximum speed
- Low profile record/pause button
- Video return button plays back the last 5 seconds of recorded material and cues the tape up to the last recorded frame to ensure proper time code sync

Recommended Extension Cables



VZEXT-8/10 - 10' Length
VZEXT-8/20 - 20' Length
VZEXT-8/50 - 50' Length

VZRC100 8-pin Canon Zoom Control



The VZRC100 Canon Zoom Control is our basic affordable Canon zoom control. With its high-sensitivity rocker, precise repeatable zooms are easily achieved. Perfect for tripods, stabilizers and shoulder supports.

- Pressure-sensitive zoom rocker
- Low profile record/pause button
- Video return button plays back the last 5 seconds of recorded material
- Rubber lined clamp for easy tightening

Recommended Extension Cables



VZEXT-8/10 - 10' Length
VZEXT-8/20 - 20' Length
VZEXT-8/50 - 50' Length

VZSTEALTH LANC Joystick Zoom/Focus Control



A stylish, lightweight body houses our improved, second-generation proprietary electronics. The pressure-sensitive 'throttle' control allows you to ease into zooms in either direction, hold a steady speed, or instantly accelerate into a 'crash' zoom. The Stealth is completely intuitive and smooth, requiring no setup, power, or operator skill.

- Throttle provides variable-speed zoom control
- Dedicated "rocker style" focus button
- Low profile record/pause button
- Power On/Off button for toggling camera into or out of standby mode
- LED light indicates recording, low battery power, and tape end

Recommended Extension Cables



VZEXT-L10 - 10' Length
VZEXT-L20 - 20' Length
VZEXT-L50 - 50' Length
VZEXT-L100 - 100' Length

Canon Lens Controls

VZSTEALTH-LX LANC Deluxe Joystick Zoom/Focus Control

The LX version LANC Lens Zoom Camera Control of the Stealth has 3 additional features: Data, Autofocus, Tape Search.



- Throttle provides variable-speed zoom control
- Dedicated "rocker style" focus button
- Low profile record/pause button
- Power On/Off button for toggling camera into or out of standby mode
- Switch between auto and manual focus with the 'A' button
- Toggle onscreen information (tape time, settings) on and off with 'Data' button
- Review taped footage with F+ & F- (edit search)
- LED light indicates recording, low battery power, and tape end

Recommended Extension Cables



VZEXT-L10 - 10' Length
VZEXT-L20 - 20' Length
VZEXT-L50 - 50' Length
VZEXT-L100 - 100' Length

VZROCK LANC Deluxe Rocker Zoom/Focus Control

The VZROCK LANC camera lens control zoom control has all the features and convenience of the Stealth-LX, but utilizes a pressure-sensitive, side-to-side rocker switch like broadcast lens controls.



- Wide-sweep variable rocker for smooth, sustainable zooms
- Dedicated "rocker style" focus button*
- Low profile record/pause button
- Power On/Off button for toggling camera into or out of standby mode
- Switch between auto and manual focus with the 'A' button**
- Toggle onscreen information (tape time, settings) on and off with 'Data' button
- Review taped footage with F+ & F- (edit search)
- LED light indicates recording, low battery power, and tape end

Recommended Extension Cables



VZEXT-L10 - 10' Length
VZEXT-L20 - 20' Length
VZEXT-L50 - 50' Length
VZEXT-L100 - 100' Length

VZRL100 LANC Rocker Zoom Control

The RL100 LANC lens camera zoom control offers a smooth wide-sweep rocker for excellent control over variable-speed zoom on any camera equipped with a LANC Remote port. The ability to zoom from the tripod handle improves the operator's ability to seamlessly and smoothly capture images, and the RL100 offers reliable, precise control for a great price.



- Record button and LED indicator light that glows when your camera is in record mode and flashes when your battery is low.
- Fits on just about any tripod handle, shoulder rig, or jib and it can be extended with our 10, 20, 50 or 100 foot cables.
- 2 year warranty included

Recommended Extension Cables



VZEXT-L10 - 10' Length
VZEXT-L20 - 20' Length
VZEXT-L50 - 50' Length
VZEXT-L100 - 100' Length

Canon Lens Controls

VZLFC Electronic Follow Focus for Canon C100 - C300 series

Building on our extensive experience in designing LANC controls, the VZ-LFC is the first and only electronic rotary follow focus that works with the camera's built-in electronics. Using the 2.5mm remote port and the camera's native firmware, our proprietary LANC encoder knob adjusts focus from extremely slow to quick rates on demand. For remote focus control, this is as close you can get to having your hand on the lens without spending thousands on an external motor drive system.

- Ideal for use on jibs and tripods
- Variable speed control smoothly adjusts the focus
- Record, camera on/off, and push auto iris, as well as an indicator light for record status.
- Requires no battery (it taps power from the camera) and can be operated from longer distances using our optional extension cables.



Recommended Extension Cables



VZEXT-L10 - 10' Length
VZEXT-L20 - 20' Length
VZEXT-L50 - 50' Length
VZEXT-L100 - 100' Length

VZPROL LANC Heavy-Duty Zoom/Focus Control

Built to last a lifetime, the Pro-L LANC Lens Zoom Camera Control is our most durable and reliable control not only because of its industrial design, but because we've had the most time to refine and improve it through many production generations.

- Patented speed dial w/ rocker in pistol-grip configuration allows for preset or ramping of zooms
- Large, safely-located record/pause button
- Large manual focus buttons located on underside of unit
- Power On/Off for toggling into or out of standby mode
- Rubber-foam grip for operator comfort
- Heavy duty quick-release clamp system
- Industrial-grade aluminum housing



Recommended Extension Cables



VZEXT-L10 - 10' Length
VZEXT-L20 - 20' Length
VZEXT-L50 - 50' Length
VZEXT-L100 - 100' Length

VZPGL LANC Pistol Grip Zoom/Focus Control

Built to last a lifetime, the PG-L LANC Lens Zoom Camera Control is the compact, pistol-grip version of the Pro-L. Utilizing the same electronics as the Pro-L and in production nearly as long, choose the PG-L over the Pro-L if you want the flexibility of operating left- or right-handed, or if you simply want a more compact pro controller.

- Patented speed dial w/ rocker in pistol-grip configuration allows for preset or ramping of zooms
- Centrally-located record and manual focus buttons
- Power On/Off for toggling into or out of standby mode
- Ergonomically curved rubber-foam grip for operator comfort
- Heavy duty quick-release clamp system
- Industrial-grade compact aluminum housing



Recommended Extension Cables



VZEXT-L10 - 10' Length
VZEXT-L20 - 20' Length
VZEXT-L50 - 50' Length
VZEXT-L100 - 100' Length

Canon Lens Controls

VZPROC 8-pin Canon Zoom Control



Recommended Extension Cables



VZEXT-8/10 - 10' Length
VZEXT-8/20 - 20' Length
VZEXT-8/50 - 50' Length

The VZPROC Canon Zoom Control provides remote zoom control for most Canon professional video lenses and it will clamp to any tripod handle, jib, or support bar. The Pro-C features a dual-variable system for versatile, precise control of zoom speed. Set the maximum desired speed on the dial (located in a 'trigger' position), then use the pressure-sensitive rocker to vary the speed from a crawl all the way up to the preset max. Alternatively, depress the rocker fully and roll the dial with your index finger to ramp the speed up.

- Pair with any Canon Focus Control for \$50 Kit Savings
- NEW Professional Black Finish
- NEW Improved Clamping Hardware
- Combination of pressure-sensitive zoom rocker and speed dial provides precise dual-variable zoom control
- Speed dial acts as a limiter for max speed or a 'ramping' device
- Large, safely-located record/pause button
- Video return button plays back the last 5 seconds of recorded material and cues the tape up to the last recorded frame to ensure proper time code sync
- Rubber-foam grip for comfort
- Heavy-duty aluminum housing and quick-release clamp

VZPGC 8-pin Canon Zoom Control



Recommended Extension Cables



VZEXT-8/10 - 10' Length
VZEXT-8/20 - 20' Length
VZEXT-8/50 - 50' Length

The VZPGC 8-pin Canon Zoom Control provides remote zoom control for most Canon professional video lenses and it will clamp to any tripod handle, jib, or support bar with a unique offset swivel clamp for adjusting the angle of operation. The pistol-grip design allows left- or right-handed operation. The PG-C features a dual-variable system for versatile, precise control of zoom speed. Set the maximum desired speed on the dial (located in a 'trigger' position), then use the pressure-sensitive rocker to vary the speed from a crawl all the way up to the preset max. Alternatively, depress the rocker fully and roll the dial with your index finger to ramp the speed up.

- Combination of pressure-sensitive zoom rocker and speed dial provides precise dual-variable zoom control
- Red record/pause button
- Video return button plays back the last 5 seconds of recorded material and cues the tape up to the last recorded frame to ensure proper time code sync
- Rubber-foam grip with a 'pistol grip' curve for ergonomic comfort
- Heavy-duty, quick-release aluminum swivel clamp for angular adjustment of handle position
- Compact, heavy-duty black aluminum housing

Canon Lens Controls

VZFCC Canon Focus Control



- Pair with any Canon Zoom Control for \$50 Kit Savings
- Heavy-duty focus handle with articulated swivel clamp for angular position adjustment
- High-precision gear box fits on most Canon 'Pro' lenses
- 40" industrial drive cable accommodates any tripod configuration and provides smooth manual control
- Handle and cable are also compatible with VariZoom Fujinon gear boxes - buy one complete Canon focus control set, then just buy the VZ gear box for your Fujinon lens for savings

VZFCX Canon Focus Control



- Heavy-duty focus handle with articulated swivel clamp for angular position adjustment
- High-precision gear box fits on the Canon 16X XL Manual lens for XL1/XL1s/XL2 models
- 40" industrial drive cable accommodates any tripod configuration and provides smooth manual control
- Handle and cable are also compatible with other VariZoom gear boxes - buy one complete FC-X focus control set, then just buy the VZ gear box for your Fujinon or Canon pro lens for savings

VZEFC2 Canon Fujinon Electronic Focus or Iris Control



- Pair with any Canon or Fujinon Zoom Control for \$50 discount
- Full Manual Mode for the finest focus adjustments
- Programmable Mode for presetting up to 5 preset focal points
- LCD readout for positioning and programming
- Includes control unit, servo focus bracket, 20' cable, carrying pouch, Canon gear, Fujinon gear, Iris gear, cable straps, rechargeable battery kit
- Works up to 50' (uses common 3.5mm stereo mini-jack cables - 'headphone' type)
- Rechargeable Canon BP-915 style battery

Recommended Extension Cables



VZEXT-EFC20 - 20' Length

Canon Lens Control Kits

VZSPROC Zoom Focus Control Kit*



VZPROC

The heavy-duty aluminum housing, dual-variable speed control, and affordable price make this our most popular zoom control for Canon 8-pin lenses. The dual-variable circuit allows for the finest degree of zoom control.

VZFCC

Precisely adjust focus on your Canon lens from the tripod handle using this studio-style remote. A hefty aluminum rotating grip drives the custom-machined focus gearbox using an industrial wound-core cable, allowing smooth control of the focus ring.

VZSPGC Canon Zoom Focus Control Kit*



VZPGC

This top of the line pistol-grip control for Canon 8-pin lenses utilizes the finest components and has a beautifully machined aluminum housing and articulated clamp. The dual-variable circuit allows for the finest degree of zoom speed control.

VZFCC

Precisely adjust focus on your Canon lens from the tripod handle using this studio-style remote. A hefty aluminum rotating grip drives the custom-machined focus gearbox using an industrial wound-core cable, allowing smooth control of the focus ring. Pair with any Canon zoom control for savings.

VZ-EFZ-PGC Zoom and Electronic Focus control*



VZEFC2

Designed for use on jibs or other remote applications, this programmable remote focus control for Canon and Fujinon allows the user to adjust focus (or iris) manually or preset up to 5 quick-change positions.

VZPGC

This top of the line pistol-grip control for Canon 8-pin lenses utilizes the finest components and has a beautifully machined aluminum housing and articulated clamp. The dual-variable circuit allows for the finest degree of zoom speed control and the grip design allows left- or right-handed operation.

VZUSPGCHD Canon Zoom Focus Monitor Control Kit*



VZ-PG-C

This top of the line pistol-grip control for Canon 8-pin lenses utilizes the finest components and has a beautifully machined aluminum housing and articulated clamp. The dual-variable circuit allows for the finest degree of zoom speed control and the grip design allows left- or right-handed operation.

VZFCC

Precisely adjust focus on your Canon lens from the tripod handle using this studio-style remote. A hefty aluminum rotating grip drives the custom-machined focus gearbox using an industrial wound-core cable, allowing smooth control of the focus ring.

VZM7K

VZM7 monitor deluxe kit with sunhood/screen protector, Sony L series battery plate, high-capacity battery (6 hrs), charger, hard carrying case, swivel shoe mount, HDMI cable locks, remote zoom button for focus assist, 2 HDMI cables (standard-standard & standard-mini), AC adapter.

Fujinon Lens Controls

VZROCKF 8-pin Fujinon Zoom Control



The Rock-F is our solution for the videographer who needs a very compact, lightweight 8-pin Fujinon zoom control. With its high-sensitivity rocker and speed limiter knob, precise repeatable zooms are easily achieved. Perfect for stabilizers and jibs.

- Pair with any Fujinon Focus Control for \$50 Kit Savings
- Pressure-sensitive zoom rocker and limiter knob for setting maximum speed
- Low profile record/pause button
- Video return button plays back the last 5 seconds of recorded material and cues the tape up to the last recorded frame to ensure proper time code sync

Recommended Extension Cables



VZEXT-8/10 - 10' Length
VZEXT-8/20 - 20' Length
VZEXT-8/50 - 50' Length

VZRF100 8-pin Fujinon Zoom Control



The VZRF100 is our basic 8-pin Fujinon zoom control. With its high-sensitivity rocker, precise repeatable zooms are easily achieved. Perfect for tripods, stabilizers and shoulder supports.

- Pressure-sensitive zoom rocker
- Low profile record/pause button
- Video return button plays back the last 5 seconds of recorded material
- Rubber lined clamp for easy tightening

Recommended Extension Cables



VZEXT-8/10 - 10' Length
VZEXT-8/20 - 20' Length
VZEXT-8/50 - 50' Length

VZPROF 8-pin Fujinon Zoom Control



The VZ-Pro-F 8-pin Fujinon Zoom Control provides remote zoom control for most Fujinon professional video lenses and it will clamp to any tripod handle, jib, or support bar. The Pro-C features a dual-variable system for versatile, precise control of zoom speed. Set the maximum desired speed on the dial (located in a 'trigger' position), then use the pressure-sensitive rocker to vary the speed from a crawl all the way up to the preset max. Alternatively, depress the rocker fully and roll the dial with your index finger to ramp the speed up.

- NEW Professional Black Finish
- NEW Improved Clamping Hardware
- Combination of pressure-sensitive zoom rocker and speed dial provides precise dual-variable zoom control
- Speed dial acts as a limiter for max speed or a 'ramping' device
- Large, safely-located record/pause button
- Video return button plays back the last 5 seconds of recorded material and cues the tape up to the last recorded frame to ensure proper time code sync
- Rubber-foam grip for comfort
- Heavy-duty aluminum housing and quick-release clamp

Recommended Extension Cables



VZEXT-8/10 - 10' Length
VZEXT-8/20 - 20' Length
VZEXT-8/50 - 50' Length

Fujinon Lens Controls

VZPGF 8-pin Fujinon Zoom Control

Provides remote zoom control for Fujinon 8-pin video lenses and will clamp to any tripod handle, jib, or support bar with a unique offset articulated swivel clamp for adjusting the angle of operation. The pistol-grip design allows left- or right-handed operation. The PG-F features a dual-variable system for versatile, precise control of zoom speed.



Recommended Extension Cables



VZEXT-8/10 - 10' Length
VZEXT-8/20 - 20' Length
VZEXT-8/50 - 50' Length

- Combination of pressure-sensitive zoom rocker and speed dial provides precise dual-variable zoom control
- Speed dial acts as a limiter for max speed or a 'ramping' device
- Red record/pause button
- Video return button plays back the last 5 seconds of recorded material and cues the tape up to the last recorded frame to ensure proper timecode sync
- Rubber-foam grip with a 'pistol grip' curve for ergonomic comfort
- Heavy-duty, quick-release aluminum swivel clamp for angular adjustment of handle position
- Compact, heavy-duty black aluminum housing

VZ-PGF-12 12-pin Fujinon Zoom Control

The VZ-PG-F12 12-pin Fujinon Zoom Control provides remote zoom control for Fujinon 12-pin video lenses and it will clamp to any tripod handle, jib, or support bar with a unique offset articulated clamp for adjusting the angle of operation. The PG-F12 features a dual-variable system for versatile, precise control of zoom speed.



Recommended Extension Cables



VZEXT-12/10 - 10' Length
VZEXT-12/20 - 20' Length
VZEXT-12/50 - 50' Length

- Combination of pressure-sensitive zoom rocker and speed dial provides precise dual-variable zoom control
- Speed dial acts as a limiter for max speed or a 'ramping' device
- Red record/pause button
- Video return button plays back the last 5 seconds of recorded material and cues the tape up to the last recorded frame to ensure proper timecode sync
- Rubber-foam grip with a 'pistol grip' curve for ergonomic comfort
- Designed for use with left or right hand
- Heavy-duty, quick-release aluminum swivel clamp for angular adjustment of handle position
- Compact, heavy-duty black aluminum housing

Fujinon Lens Controls

VZFCF22 Fujinon Focus Control



Precisely adjust focus on your Fujinon lens from the tripod handle using this studio-style remote. A hefty aluminum rotating grip drives the custom-machined focus gearbox using an industrial wound-core cable, allowing smooth control of the focus ring. Pair with any Fujinon zoom control for savings.

- Pair with any Fujinon Zoom Control for \$50 Kit Savings
- Heavy-duty focus handle with articulated swivel clamp for angular position adjustment
- High-precision gear box fits on small Fujinon lenses
- 40" industrial drive cable accommodates any tripod configuration and provides smooth manual control
- Handle and cable are also compatible with other VariZoom gear boxes - buy one complete FC-F22 focus control set, then just buy the VZ gear box for your other lens for savings

VZFC350K Sony Focus Control



Unique for the popular Sony PWM-400K, -350K & -320K - the only manual focus control on the market for the stock XA16x8 & XS16x5.8 lenses commonly packaged with these cameras. Precisely adjust focus from the tripod handle using this studio-style remote. A hefty Black Knurled aluminum rotating grip drives the custom-machined focus gearbox using an industrial wound-core cable, allowing smooth control of the focus ring.

- Pair with any Fujinon 8-pin Zoom Control for \$50 Kit Savings
- Heavy-duty focus handle with articulated swivel clamp for angular position adjustment
- Knurled texture on handle provides a good grip for smooth focus pulling
- Black anodized finish
- High-precision gear box fits on Fujinon XA16x8 & XS16x5.8 lenses found on Sony PMW-400K/-350K and PMW-320K
- 40" industrial drive cable accommodates any tripod configuration and provides smooth manual control

Fujinon Lens Controls

VZFCF Fujinon Focus Control



Precisely adjust focus on your Fujinon lens from the tripod handle using this studio-style remote. A hefty aluminum rotating grip drives the custom-machined focus gearbox using an industrial wound-core cable, allowing smooth control of the focus ring.

- Pair with any Fujinon Zoom Control for \$50 Kit Savings
- Heavy-duty focus handle with articulated swivel clamp for angular position adjustment
- High-precision gear box fits on most Fujinon lenses
- 40" industrial drive cable accommodates any tripod configuration and provides smooth manual control
- Handle and cable are also compatible with other VariZoom gear boxes - buy one complete FC-F focus control set, then just buy the VZ gear box for your other lens for savings



VZEFC2 Canon Fujinon Electronic Focus or Iris Control

Designed for use on jibs or other remote applications, this programmable remote focus control for Canon and Fujinon allows the user to adjust focus (or iris) manually or preset up to 5 quick-change positions.

- Pair with any Canon or Fujinon Zoom Control for \$50 discount
- Full Manual Mode for the finest focus adjustments
- Programmable Mode for presetting up to 5 preset focal points
- LCD readout for positioning and programming
- Includes control unit, servo focus bracket, 20' cable, carrying pouch, Canon gear, Fujinon gear, Iris gear, cable straps, rechargeable battery kit
- Works up to 50' (uses common 3.5mm stereo mini-jack cables - 'headphone' type)
- Rechargeable Canon BP-915 style battery

Recommended Extension Cables



VZEXT-EFC20 - 20' Length

Fujinon Lens Control Kits

VZSPROF2 Fujinon Zoom Focus Control Kit*



VZPROF

The heavy-duty aluminum housing, dual-variable speed control, and affordable price make this our most popular zoom control for Fujinon 8-pin lenses. The dual-variable circuit allows for the finest degree of zoom control.

VZFCF22

Precisely adjust focus on your Fujinon lens from the tripod handle using this studio-style remote. A hefty aluminum rotating grip drives the custom-machined focus gearbox using an industrial wound-core cable, allowing smooth control of the focus ring.

VZSROCKF Fujinon Zoom Focus Control Kit*



VZROCKF

Our most compact, lightweight and affordable control for Fujinon professional lenses. The pressure-sensitive rocker is complemented by a speed limiter knob. Ideal for use on jibs, stabilizers, or applications where size and weight are critical.

VZFCF

Precisely adjust focus on your Fujinon lens from the tripod handle using this studio-style remote. A hefty aluminum rotating grip drives the custom-machined focus gearbox using an industrial wound-core cable, allowing smooth control of the focus ring.

VZSPROF Fujinon Zoom Focus Control Kit*



VZPROF

The heavy-duty aluminum housing, dual-variable speed control, and affordable price make this our most popular zoom control for Fujinon 8-pin lenses. The dual-variable circuit allows for the finest degree of zoom control.

VZFCF

Precisely adjust focus on your Fujinon lens from the tripod handle using this studio-style remote. A hefty aluminum rotating grip drives the custom-machined focus gearbox using an industrial wound-core cable, allowing smooth control of the focus ring.

VZSPGF12 Fujinon Zoom Focus Control Kit*



VZPGF12

This top of the line pistol-grip control for Fujinon 12-pin lenses utilizes the finest components and has a beautifully machined aluminum housing and articulated clamp. The dual-variable circuit allows for the finest degree of zoom speed control.

VZFCF

Precisely adjust focus on your Fujinon lens from the tripod handle using this studio-style remote. A hefty aluminum rotating grip drives the custom-machined focus gearbox using an industrial wound-core cable, allowing smooth control of the focus ring.

Fujinon Lens Control Kits

VZSPGF Fujinon Zoom Focus Control Kit*



VZPGF

This top of the line pistol-grip control for Fujinon 8-pin lenses utilizes the finest components and has a beautifully machined aluminum housing and articulated clamp. The dual-variable circuit allows for the finest degree of zoom speed control.

VZFCF

Precisely adjust focus on your Fujinon lens from the tripod handle using this studio-style remote. A hefty aluminum rotating grip drives the custom-machined focus gearbox using an industrial wound-core cable, allowing smooth control of the focus ring.

VZSPG350 Fujinon Zoom Focus Control Kit*



VZPGF

This top of the line pistol-grip control for Fujinon 8-pin lenses utilizes the finest components and has a beautifully machined aluminum housing and articulated clamp. The dual-variable circuit allows for the finest degree of zoom speed control.

VZFC350K

New for the popular Sony PWM-400K, -350K & -320K - the only manual focus control on the market for the stock XA16x8 & XS16x5.8 lenses commonly packaged with these cameras. Precisely adjust focus from the tripod handle using this studio-style remote. A hefty Black Knurled aluminum rotating grip drives the custom-machined focus gearbox using an industrial wound-core cable, allowing smooth control of the focus ring.



VZ-EFZ-PGF Zoom and Electronic Focus Control*



VZEFC2

Designed for use on jibs or other remote applications, this programmable remote focus control for Canon and Fujinon allows the user to adjust focus (or iris) manually or preset up to 5 quick-change positions.

VZPGF

This top of the line pistol-grip control for Fujinon 8-pin lenses utilizes the finest components and has a beautifully machined aluminum housing and articulated clamp. The dual-variable circuit allows for the finest degree of zoom speed control, and the grip design allows left- or right-handed operation.

VZUSPG350 Fujinon Zoom Focus Monitor Control Kit*



VZ-PGF

This top of the line pistol-grip control for Fujinon 8-pin lenses utilizes the finest components and has a beautifully machined aluminum housing and articulated clamp. The dual-variable circuit allows for the finest degree of zoom speed control. Pair with any Fujinon focus control for savings.

VZ-FC350K

New for the popular Sony PWM-400K, PMW-350K & PMW-320K - the only manual focus control on the market for the stock XA16x8 & XS16x5.8 lenses commonly packaged with these cameras. Precisely adjust focus from the tripod handle using this studio-style remote. A hefty Black Knurled aluminum rotating grip drives the custom-machined focus gearbox using an industrial wound-core cable, allowing smooth control of the focus ring. Pair with any Fujinon 8pin zoom control for a kit discount.

VZ-M7K

VZM7 monitor deluxe kit with sunhood/screen protector, Sony L series battery plate, high-capacity battery (6 hrs), charger, hard carrying case, swivel shoe mount, HDMI cable locks, remote zoom button for focus assist, 2 HDMI cables (standard-standard & standard-mini), AC adapter.

Fujinon Lens Control Kits

VZUSPGFHD Fujinon Zoom Focus Monitor Control Kit*



VZ-PG-F

This top of the line pistol-grip control for Fujinon 8-pin lenses utilizes the finest components and has a beautifully machined aluminum housing and articulated clamp. The dual-variable circuit allows for the finest degree of zoom speed control, and the grip design allows left- or right-handed operation.

VZFCF

Precisely adjust focus on your Fujinon lens from the tripod handle using this studio-style remote. A hefty aluminum rotating grip drives the custom-machined focus gearbox using an industrial wound-core cable, allowing smooth control of the focus ring.

VZM7K

Monitor deluxe kit with sunhood/screen protector, Sony L series battery plate, high-capacity battery (6 hrs), charger, hard carrying case, swivel shoe mount, HDMI cable locks, remote zoom button for focus assist, 2 HDMI cables (standard-standard & standard-mini), AC adapter.

VZUSPGF12HD Fujinon Zoom Focus Monitor Control Kit*



VZPGF12

This top of the line pistol-grip control for Fujinon 12-pin lenses utilizes the finest components and has a beautifully machined aluminum housing and articulated clamp. The dual-variable circuit allows for the finest degree of zoom speed control.

VZFCF

Precisely adjust focus on your Fujinon lens from the tripod handle using this studio-style remote. A hefty aluminum rotating grip drives the custom-machined focus gearbox using an industrial wound-core cable, allowing smooth control of the focus ring.

VZM7K

Monitor deluxe kit with sunhood/screen protector, Sony L series battery plate, high-capacity battery (6 hrs), charger, hard carrying case, swivel shoe mount, HDMI cable locks, remote zoom button for focus assist, 2 HDMI cables (standard-standard & standard-mini), AC adapter.

VZ-UEFZ-PGF Monitor + Zoom + Electronic Focus Control*



VZEFC2

Designed for use on jibs or other remote applications, this programmable remote focus control for Canon and Fujinon allows the user to adjust focus (or iris) manually or preset up to 5 quick-change positions.

VZPGF

This top of the line pistol-grip control for Fujinon 8-pin lenses utilizes the finest components and has a beautifully machined aluminum housing and articulated clamp. The dual-variable circuit allows for the finest degree of zoom speed control, and the grip design allows left- or right-handed operation.

VZM7K

Monitor deluxe kit with sunhood/screen protector, Sony L series battery plate, high-capacity battery (6 hrs), charger, hard carrying case, swivel shoe mount, HDMI cable locks, remote zoom button for focus assist, 2 HDMI cables (standard-standard & standard-mini), AC adapter.

JVC Lens Controls

VZROCK-J150 Proprietary JVC Control

The VZ-Rock-J150 lens camera control for zoom/focus/iris control is specifically designed for the JVC GY-HM150, GY-HMQ10, and GY-HM70U cameras. The zoom rocker has a greater range of motion for a fine degree of speed control.

- Wide-sweep variable rocker for smooth, sustainable zooms
- Dedicated "rocker style" focus button*
- Low profile record/pause button
- Adjust iris with the "F-" and "F+" buttons
- LED light indicates recording status



Recommended Extension Cables



VZEXT-L10 - 10' Length
VZEXT-L20 - 20' Length
VZEXT-L50 - 50' Length
VZEXT-L100 - 100' Length

VZROCK-J600 LANC Zoom/Focus/Iris Control

The VZ-Rock-J600 lens zoom camera control for zoom/focus/iris control is specifically designed for the JVC GY-HM600 and GY-HM650 cameras. The zoom rocker has a greater range of motion for a fine degree of speed control.

- Wide-sweep variable rocker for smooth, sustainable zooms
- Dedicated "rocker style" focus button*
- Low profile record/pause button
- "On" button for toggling camera between Auto and Manual Iris modes
- Switch between auto and manual focus with the 'A' button**
- Toggle onscreen information (tape time, settings) on and off with 'Data' button
- Adjust iris with the "F-" and "F+" buttons
- LED light indicates recording status



Recommended Extension Cables



VZEXT-L10 - 10' Length
VZEXT-L20 - 20' Length
VZEXT-L50 - 50' Length
VZEXT-L100 - 100' Length

HZ-HM800VZRKIT Rear Control Kit for GY-890U, GY-850U

Available exclusively through JVC Professional / Authorized JVC resellers, this unique studio-style 2-handle zoom/focus/iris control makes full use of the autofocus kit lens included with GY-890U and GY-850U cameras. On one handle is the dual-variable analog zoom control w/ record and push-autofocus, while on the other handle is a completely unique remote electronic focus/iris control designed solely for use with 800-series cameras equipped with the 20x autofocus lens. The variable-speed focus unit offers precise manual control with a large, smoothly-rotating dial, in addition to manual iris control and toggle buttons for switching back and forth between auto and manual control for both iris and focus. The analog zoom remote incorporates our patented variable rocker + trigger speed dial for smooth ramping or max speed preset. Both remotes can be extended over 100' with optional extension cables.



Recommended Extension Cables



VZEXT-L10 - 10' Length
VZEXT-L20 - 20' Length
VZEXT-L50 - 50' Length
VZEXT-L100 - 100' Length



VZEXT-8/10 - 10' Length
VZEXT-8/20 - 20' Length
VZEXT-8/50 - 50' Length

Panasonic Lens Controls

VZSTEALTHDVX Joystick Zoom Control



VZSTEALTHDVX Lens Zoom Camera Control a stylish, lightweight body houses our pressure-sensitive 'throttle' control, which allows you to ease into zooms in either direction, hold a steady speed, or instantly accelerate into a 'crash' zoom. The StealthDVX is completely intuitive and smooth, requiring no setup, power, or operator skill. This unique miniature control offers unmatched convenience, value, and performance.

- Throttle provides variable-speed zoom control
- Low profile record/pause button

Recommended Extension Cables



VZEXT-L10 - 10' Length
VZEXT-L20 - 20' Length
VZEXT-L50 - 50' Length
VZEXT-L100 - 100' Length

VZROCKDVX Rocker Zoom Control



The RockDVX Zoom Lens Camera Control utilizes a pressure-sensitive, side-to-side rocker switch like broadcast zoom controls. This rocker has a greater range of motion for a finer degree of zoom control than the StealthDVX.

- Wide-sweep variable rocker for smooth, sustainable zooms
- Low profile record/pause button

Recommended Extension Cables



VZEXT-L10 - 10' Length
VZEXT-L20 - 20' Length
VZEXT-L50 - 50' Length
VZEXT-L100 - 100' Length

VZPFI Lens Focus/Iris Control



Specifically designed for Panasonic cameras, the affordable and versatile VZPFI offers precision focus and iris control. Operator may switch between auto and manual at anytime. Works on all camera supports, stabilizers, tripods, & jibs.

- Controls Focus/Iris
- Switch between auto and manual
- Independent focus/iris knobs
- Smooth and quiet precision knobs
- Warranty: 2 years parts/labor

Recommended Extension Cables



VZEXT-PZFI-10 - 10' Length
VZEXT-PZFI-20 - 20' Length
VZEXT-PZFI-50 - 50' Length

Panasonic Lens Controls

VZSTEALTHPZFI Lens Joystick Zoom/Focus/Iris Control



Recommended Extension Cables



VZEXT-PZFI-10 - 10' Length
VZEXT-PZFI-20 - 20' Length
VZEXT-PZFI-50 - 50' Length

VZSTEALTHPZFI Lens Camera Control is a stylish, lightweight body houses our pressure-sensitive 'throttle' control, which allows you to ease into zooms in either direction, hold a steady speed, or instantly accelerate into a 'crash' zoom. The StealthPZFI is completely intuitive and smooth, requiring no setup, power, or operator skill. This unique miniature control offers unmatched convenience, value, and performance. Independent focus/iris knobs allow two people to operate together for critical focus during moving shots or crane moves—imagine the possibilities! The manual/auto switches lock into position, letting you watch the picture, not your hands.

- Throttle provides variable-speed zoom control
- Low profile record/pause button
- Unique dual-knob adjustment of Focus and Iris
- Position switches for manual/auto modes

VZROCKPZFI Rocker Zoom/Focus/Iris Control



Recommended Extension Cables



VZEXT-PZFI-10 - 10' Length
VZEXT-PZFI-20 - 20' Length
VZEXT-PZFI-50 - 50' Length

The RockZFI Zoom Lens Camera Control utilizes a pressure-sensitive, side-to-side rocker switch like broadcast zoom controls. This rocker has a greater range of motion for a finer degree of zoom control than the throttle style zoom controls. Adjust iris or focus using smooth and quiet knobs that provide easy operation while you compose your shots. Independent focus/iris knobs allow two people to operate together for critical focus during moving shots or crane moves - imagine the possibilities! The manual/auto switches lock into position, letting you watch the picture, not your hands.

- Wide-sweep variable rocker for smooth, sustainable zooms
- Low profile record/pause button
- Unique dual knob adjustment
- Position switches for manual/auto modes

VZPG-PZ Pistol-Grip Zoom Control



Recommended Extension Cables



VZEXT-L10 - 10' Length
VZEXT-L20 - 20' Length
VZEXT-L50 - 50' Length
VZEXT-L100 - 100' Length

The VZ-PG-PZ Zoom Lens Camera Control provides remote zoom control for compatible Panasonic camcorders and it will clamp to any tripod handle, jib, or support bar. The PG-PZ features precise control of zoom speed, comfortable grip, heavy-duty aluminum housing, and articulated swivel clamp. Pair with a VZ-PFI focus/iris controller for studio-style two handle operation or if you need someone pulling focus/iris separately.

- Pressure-sensitive zoom rocker provides precise zoom speed control
- Red record/pause button
- Rubber-foam grip with a 'pistol grip' curve for ergonomic comfort
- Designed for use with left or right hand
- Heavy-duty, quick-release aluminum swivel clamp for angular adjustment of handle position
- Compact, heavy-duty black aluminum housing

Panasonic Lens Controls

VZPRO-PZFI Heavy-Duty Zoom/Focus/Iris Control



The ultimate professional Zoom, Focus, and Iris controller for Panasonic Cameras uses our rugged aluminum housing and the finest quality components for precise, reliable operation.

- Controls Zoom, Focus and Iris
- Robust aluminum housing and heavy-duty precision components
- Variable high-sensitivity rocker
- Hefty aluminum knobs for focus and iris
- Single-hand operation of all functions
- Focus while Zooming with a single hand - Focus Knob conveniently located in the 'trigger position', so you can zoom with your thumb while pulling focus with your index finger

Recommended Extension Cables



VZEXT-PZFI-10 - 10' Length
VZEXT-PZFI-20 - 20' Length
VZEXT-PZFI-50 - 50' Length

VZPRO-PZFI-3D 3D Zoom/Focus/Iris/Convergence Control



The ultimate professional Zoom, Focus, Iris, and Convergence controller for Panasonic 3D Cameras (like the AG-3DA1) uses our rugged aluminum housing and the finest quality components for precise, reliable operation.

- Controls Zoom, Focus, Iris
- Robust aluminum housing and heavy-duty precision components
- Variable high-sensitivity rocker
- Custom Oversized Aluminum Knob for Convergence
- Hefty aluminum knobs for focus and iris
- Single-hand operation of all functions
- Focus while Zooming with a single hand - Focus Knob conveniently located in the 'trigger position', so you can zoom with your thumb while pulling focus with your index finger

Recommended Extension Cables



VZEXT-PZFI-10 - 10' Length
VZEXT-PZFI-20 - 20' Length
VZEXT-PZFI-50 - 50' Length



VZEXT-L10 - 10' Length
VZEXT-L20 - 20' Length
VZEXT-L50 - 50' Length
VZEXT-L100 - 100' Length

*2 types of extension cables needed to extend beyond 3.5' (dual PZFI cable for zoom/focus/iris PLUS single L-cable for convergence)

Panasonic Lens Control Kits

VZSROCK-ZFI 2-Handle Zoom/Focus/Iris Control*



VZROCKDVX

Specifically designed for Panasonic cameras, the VZROCKDVX offers the finest degree of zoom control with a wide-sweep rocker favored by broadcast operators. Combining this with a compact, intuitive design, the VZROCKDVX represents the best of both world

VZPFI

Specifically designed for Panasonic cameras, the affordable and versatile VZPFI offers precision focus and iris control. Operator may switch between auto and manual at anytime. Works on all camera supports, stabilizers, tripods, & jibs.

VZSPG-PZFI 2-Handle Pistol Grip Zoom/Focux/Iris Control*



VZPG-PZ

This top of the line pistol-grip control for Panasonic camcorders utilizes the finest components and has a beautifully machined aluminum housing and articulated clamp. The professional variable rocker offers precise control of zoom speed, and the grip design allows left- or right-handed operation. VariZoom is proud to offer the first professional pistol-grip zoom control for Panasonic HVX/HPX/HMC/DVX/DVC camcorders.

VZPFI

Specifically designed for Panasonic cameras, the affordable and versatile VZPFI offers precision focus and iris control. Operator may switch between auto and manual at anytime. Works on all camera supports, stabilizers, tripods, & jibs.

VZUSROCKZFIHD Monitor/Zoom/Focus/Iris Kit*



VZROCKDVX

Specifically designed for Panasonic cameras, the VZROCKDVX offers the finest degree of zoom control with a wide-sweep rocker favored by broadcast operators.

VZPFI

Specifically designed for Panasonic cameras, the affordable and versatile VZPFI offers precision focus and iris control.

VZ-M7K

VZM7 monitor deluxe kit with sunhood/screen protector, Sony L series battery plate, high-capacity battery (6 hrs), charger, hard carrying case, swivel shoe mount, HDMI cable locks, remote zoom button for focus assist, 2 HDMI cables (standard-standard & standard-mini), AC adapter.

VZUSPG-PZFIHD Monitor/PG Zoom/Focus/Iris Kit*



VZPG-PZ

This top of the line pistol-grip control for Panasonic camcorders utilizes the finest components and has a beautifully machined aluminum housing and articulated clamp. The professional variable rocker offers precise control of zoom speed, and the grip design allows left- or right-handed operation.

VZPFI

Specifically designed for Panasonic cameras, the affordable and versatile VZPFI offers precision focus and iris control.

VZ-M7K

VZM7 monitor deluxe kit with sunhood/screen protector, Sony L series battery plate, high-capacity battery (6 hrs), charger, hard carrying case, swivel shoe mount, HDMI cable locks, remote zoom button for focus assist, 2 HDMI cables (standard-standard & standard-mini), AC adapter.

Sony Lens Controls

VZSTEALTH LANC Joystick Zoom/Focus Control

A stylish, lightweight body houses our improved, second-generation proprietary electronics. The pressure-sensitive 'throttle' control allows you to ease into zooms in either direction, hold a steady speed, or instantly accelerate into a 'crash' zoom. The Stealth is completely intuitive and smooth, requiring no setup, power, or operator skill. This unique miniature control offers unmatched convenience, value, and performance.

- Throttle provides variable-speed zoom control
- Dedicated "rocker style" focus button
- Low profile record/pause button
- Power On/Off button for toggling camera into or out of standby mode
- LED light indicates recording, low battery power, and tape end



Recommended Extension Cables



VZEXT-L10 - 10' Length
VZEXT-L20 - 20' Length
VZEXT-L50 - 50' Length
VZEXT-L100 - 100' Length

VZRL100 LANC Rocker Zoom Control

The RL100 LANC lens camera zoom control offers a smooth wide-sweep rocker for excellent control over variable-speed zoom on any camera equipped with a LANC Remote port. The ability to zoom from the tripod handle improves the operator's ability to seamlessly and smoothly capture images, and the RL100 offers reliable, precise control for a great price. The RL100 also features a record button and LED indicator light that glows when your camera is in record mode and flashes when your battery is low. It fits on just about any tripod handle, shoulder rig, or jib and it can be extended with our 10, 20, 50 or 100 foot cables. Includes VariZoom's no-hassle 2 year warranty and the peace of mind that comes with owning a controller from the industry leader.



Recommended Extension Cables



VZEXT-L10 - 10' Length
VZEXT-L20 - 20' Length
VZEXT-L50 - 50' Length
VZEXT-L100 - 100' Length

VZSTEALTHLX LANC Deluxe Joystick Zoom/Focus Control

The LX version LANC Lens Zoom Camera Control of the Stealth has 3 additional features: Data, Autofocus, Tape Search. A stylish, lightweight body houses our improved, second-generation proprietary electronics. The pressure-sensitive 'throttle' control allows you to ease into zooms in either direction, hold a steady speed, or instantly accelerate into a 'crash' zoom. The Stealth is completely intuitive and smooth, requiring no setup, power, or operator skill. This unique miniature control offers unmatched convenience, value, and performance.

- Throttle provides variable-speed zoom control
- Dedicated "rocker style" focus button
- Low profile record/pause button
- Power On/Off button for toggling camera into or out of standby mode
- Switch between auto and manual focus with the 'A' button
- Toggle onscreen information (tape time, settings) on and off with 'Data' button
- Review taped footage with F+ & F- (edit search)
- LED light indicates recording, low battery power, and tape end



Recommended Extension Cables



VZEXT-L10 - 10' Length
VZEXT-L20 - 20' Length
VZEXT-L50 - 50' Length
VZEXT-L100 - 100' Length

Sony Lens Controls

VZROCK LANC Deluxe Rocker Zoom/Focus Control



Recommended Extension Cables



VZEXT-L10 - 10' Length
VZEXT-L20 - 20' Length
VZEXT-L50 - 50' Length
VZEXT-L100 - 100' Length

The VZROCK LANC camera lens control zoom control has all the features and convenience of the Stealth-LX, but utilizes a pressure-sensitive, side-to-side rocker switch like broadcast lens controls. This rocker has a greater range of motion for a finer degree of zoom control.

- Wide-sweep variable rocker for smooth, sustainable zooms
- Dedicated "rocker style" focus button*
- Low profile record/pause button
- Power On/Off button for toggling camera into or out of standby mode
- Switch between auto and manual focus with the 'A' button**
- Toggle onscreen information (tape time, settings) on and off with 'Data' button
- Review taped footage with F+ & F- (edit search)
- LED light indicates recording, low battery power, and tape end

VZPROL LANC Heavy-Duty Zoom/Focus Control



Recommended Extension Cables



VZEXT-L10 - 10' Length
VZEXT-L20 - 20' Length
VZEXT-L50 - 50' Length
VZEXT-L100 - 100' Length

Built to last a lifetime, the Pro-L LANC Lens Zoom Camera Control is our most durable and reliable control not only because of its industrial design, but because we've had the most time to refine and improve it through many production generations.

- Patented speed dial w/ rocker in pistol-grip configuration allows for preset or ramping of zooms
- Large, safely-located record/pause button
- Large manual focus buttons located on underside of unit
- Power On/Off for toggling into or out of standby mode
- Rubber-foam grip for operator comfort
- Heavy duty quick-release clamp system
- Industrial-grade aluminum housing

VZPGL LANC Pistol-Grip Zoom/Focus Control



Recommended Extension Cables



VZEXT-L10 - 10' Length
VZEXT-L20 - 20' Length
VZEXT-L50 - 50' Length
VZEXT-L100 - 100' Length

Built to last a lifetime, the PG-L LANC Lens Zoom Camera Control is the compact, pistol-grip version of the Pro-L. Utilizing the same electronics as the Pro-L and in production nearly as long, choose the PG-L over the Pro-L if you want the flexibility of operating left- or right-handed, or if you simply want a more compact pro controller.

- Patented speed dial w/ rocker in pistol-grip configuration allows for preset or ramping of zooms
- Centrally-located record and manual focus buttons
- Power On/Off for toggling into or out of standby mode
- Ergonomically curved rubber-foam grip for operator comfort
- Heavy duty quick-release clamp system
- Industrial-grade compact aluminum housing

Sony Lens Controls

VZROCKEX Sony 8-pin Zoom Control

The VZROCKEX Lens Zoom Camera Control is our solution for the videographer who needs a very compact, lightweight zoom control for Sony PXW-X200, PMW-300, -200, -160, -EX1, or -EX3 camcorders. With its high-sensitivity rocker, precise, repeatable zooms are easily achieved. The VZ Rock-EX is perfect for stabilizers and jibs.

- Pressure-sensitive zoom rocker provides precise zoom control
- Rubber-lined clamp for no-slip attachment to any bar up to 1.25"
- Low profile record/pause button
- Video return button plays back the last 5 seconds of recorded material



Recommended Extension Cables



VZEXT-EX10 - 10' Length
VZEXT-EX20 - 20' Length
VZEXT-EX50 - 50' Length

VZROCKEXD Deluxe Sony 8-pin Zoom Control

The Rock-EXD Lens Zoom Camera Control is an upgraded version of the popular Rock-EX that includes a large diameter speed dial for the absolute finest degree of zoom speed control. The speed dial allows the operator to set and mark the maximum desired speed and the feather the variable zoom rocker for delicate and repeatable zooms. Works with Sony PXW-X200, PMW-300, -200, -160, -EX1, or -EX3 camcorders. With its high-sensitivity rocker, precise, repeatable zooms are easily achieved. The VZ Rock-EX is perfect for tripods, stabilizers, jibs and shoulder supports.

- Pressure-sensitive zoom rocker provides precise zoom control
- Speed dial w/ marker ring for presetting max zoom speed
- Rubber-lined clamp for no-slip attachment to any bar up to 1.25"
- Low profile record/pause button
- Video return button plays back the last 5 seconds of recorded material



Recommended Extension Cables



VZEXT-EX10 - 10' Length
VZEXT-EX20 - 20' Length
VZEXT-EX50 - 50' Length

VZPROEX Heavy-Duty Sony 8-pin Zoom Control

The VZ Pro-EX Lens Zoom Camera Control provides remote zoom control for the Sony PXW-X200, PMW-300, 200, -160 -EX1 and -EX3 professional video camera and it will clamp to any tripod handle, jib, or support bar. The Pro-EX features precise control of zoom speed, comfortable grip, and a heavy-duty aluminum housing.

- NEW Professional Black Finish
- NEW Improved Clamping Hardware
- Combination of pressure-sensitive zoom rocker and speed dial provides precise dual-variable zoom control
- Large, safely-located record/pause button
- Video return button plays back the last 5 seconds of recorded material
- Rubber-foam grip for comfort
- Heavy-duty aluminum housing and quick-release clamp



Recommended Extension Cables



VZEXT-EX10 - 10' Length
VZEXT-EX20 - 20' Length
VZEXT-EX50 - 50' Length

Sony Lens Controls

VZPGEX Pistol-Grip Sony 8-pin Zoom Control



Recommended Extension Cables



VZEXT-EX10 - 10' Length
VZEXT-EX20 - 20' Length
VZEXT-EX50 - 50' Length

The VZ PG-EX Lens Zoom Camera Control provides remote zoom control for the Sony PMW-300, -200, -160, -EX1 and -EX3 professional video cameras and it will clamp to any tripod handle, jib, or support bar. The PG-EX features precise control of zoom speed, comfortable grip, and a heavy-duty aluminum housing.

- Combination of pressure-sensitive zoom rocker and speed dial provides precise dual-variable zoom control
- Red record/pause button
- Video return button plays back the last 5 seconds of recorded material
- Rubber-foam grip with a 'pistol grip' curve for ergonomic comfort
- Designed for use with left or right hand
- Heavy-duty, quick-release aluminum swivel clamp for angular adjustment of handle position
- Compact, heavy-duty black aluminum housing

VZFC-U Sony Manual Focus Control



The VZFC-U Lens Focus Control provides smooth manual focus control of your Sony PXW-X200 / PMW-300/200/160/EX1/EX3 from the tripod handle. Similar to our pro rear focus controls, the FC-U adds a clamp-on EX gear adapter and a bracket-mounted gearbox that fits on most rod systems (15/19mm).

- PXW-X200 / PMW-300/200/160/EX1/EX3
- Rotating control handle, drive cable, and bracket-mounted gearbox for driving the clamp-on focus ring that attaches to the lens.
- Attaches to any 15mm/19mm rods.

*Rods required for assembly/operation

VZEFC2U Universal Electronic Focus Control Broadcast & DSLR Lenses



Recommended Extension Cables



VZEXT-EX10 - 10' Length
VZEXT-EX20 - 20' Length
VZEXT-EX50 - 50' Length

VZEFC2U is the improved MkII version of our universal electronic focus control. The motor mounts to 15mm/19mm rods and includes a universal gear set and clamp-on adapter rings, so you can use this system with nearly any broadcast or DSLR lens with endpoints. Perfect for Canon C100, C300, Sony PXW-200, PMW-300 or any camera using DSLR or broadcast lenses. This system allows for precise, repeatable focusing and allows up to 5 programmable presets for quick and accurate "go-to-marks." The MkII hand unit includes a large focus knob and convenient Canon BP-915 type battery pack. You can also use this unit to control iris on a lens with a no-click ring.

Note: Product requires rails / rods to mount the drive motor, such as our VZDVRods.

- Full Manual Mode for the finest focus adjustments
- Programmable Mode for presetting up to 5 preset focal points
- LCD readout for positioning and programming
- Includes control unit, servo focus bracket, 20' cable, carrying pouch, 32DP gear, Canon gear, Fujinon gear, Iris gear, clamp-on gear ring adapters, cable straps, rechargeable battery kit
- Works up to 50' (uses common 3.5mm stereo mini-jack - 'headphone type')
- Rechargeable Canon BP-915 style battery

Sony Lens Control Kits

VZSROCKEX-R Lens Control Kit*



VZROCKEX

Our most compact and lightweight control for Sony PXW-X200, PMW-300,-200, -160, -EX1, and -EX3 camcorders. Ideal for use on tripods, jibs, stabilizers, or shoulder supports.

VZFC-U

Our FC-U manual focus system allows you to pull focus on your Sony PXW-X200 / PMW-300/200/160/EX1/EX3 from the tripod handle.

VZDVRODS

Our affordable, high-quality rods system for HDV cameras enables you to attach matteboxes, focus control systems, wireless adapters, and other accessories.

VZSROCKEXD-R Lens Control Kit*



VZROCKEXD

This upgraded version of our most compact and lightweight control for Sony PXW-X200, PMW-200, -160, -EX1, and -EX3 camcorders allows even finer zoom speed control.

VZFC-U

Our FC-U manual focus system allows you to pull focus on your Sony PXW-X200 / PMW-300/200/160/EX1/EX3 from the tripod handle.

VZDVRODS

Our affordable, high-quality rods system for HDV cameras enables you to attach matteboxes, focus control systems, wireless adapters, and other accessories.

VZSPROEX-R Lens Control Kit*



VZPROEX

This professional comfort grip control for the Sony PXW-X200, PMW-200, -160, -EX1 and -EX3 utilizes the finest components and has a heavy-duty aluminum housing.

VZFC-U

Our FC-U manual focus system allows you to pull focus on your Sony PXW-X200 / PMW-300/200/160/EX1/EX3 from the tripod handle.

VZDVRODS

Our affordable, high-quality rods system for HDV cameras enables you to attach matteboxes, focus control systems, wireless adapters, and other accessories.

Sony Lens Control Kits



VZ-EFZ-RX Zoom & Electronic Focus Control Kit* for Sony PXW-200, PMW-300

VZROCKEXD

This upgraded version of our most compact and lightweight control for Sony PXW-X200, PMW-200, -160, -EX1, and -EX3 camcorders allows even finer zoom speed control.

VZEFC2U

The EFC2U is a universal programmable electronic focus control that works with the Canon C100, C300, Sony PXW-X200, PMW-300/200, in addition to Canon, Fujinon, and DSLR lenses.

VZDVRODS

Our affordable, high-quality rods system for HDV cameras enables you to attach matteboxes, focus control systems, wireless adapters, and other accessories.

VZSPGEX-R Lens Control Kit*



VZPG-EX

This top of the line pistol-grip control for the Sony PXW-X200, PMW-300, -200, -160, -EX1 and -EX3 utilizes the finest components and has a beautifully machined aluminum housing and articulated clamp.

VZFC-U

Our FC-U manual focus system allows you to pull focus on your Sony PXW-X200 / PMW-300/200/160/EX1/EX3 from the tripod handle.

VZDVRODS

Our affordable, high-quality rods system for HDV cameras enables you to attach matteboxes, focus control systems, wireless adapters, and other accessories.



VZ-EFZ-PGX Zoom & Electronic Focus Control* for Sony PXW-200, PMW-300

VZPG-EX

This top of the line pistol-grip control for the Sony PXW-X200, PMW-300, -200, -160, -EX1 and -EX3 utilizes the finest components and has a beautifully machined aluminum housing and articulated clamp.

VZEFC2U

The EFC2U is a universal programmable electronic focus control that works with the Canon C100, C300, Sony PXW-X200, PMW-300/200, in addition to Canon, Fujinon, and DSLR lenses.

VZDVRODS

Our affordable, high-quality rods system for HDV cameras enables you to attach matteboxes, focus control systems, wireless adapters, and other accessories.

Sony Lens Control Kits



VZ-UEFZ-RX Zoom, Electronic Focus, Monitor Kit* for Sony PXW-200, PMW-300

VZROCKEXD

This upgraded version of our most compact and lightweight control for Sony PXW-X200, PMW-200, -160, -EX1, and -EX3 camcorders allows even finer zoom speed control.

VZEFC2U

The EFC2U is a universal programmable electronic focus control that works with the Canon C100, C300, Sony PXW-X200, PMW-300/200, in addition to Canon, Fujinon, and DSLR lenses.

VZDVRODS

Our affordable, high-quality rods system for HDV cameras enables you to attach matteboxes, focus control systems, wireless adapters, and other accessories.

VZ-M7K

VZM7 monitor deluxe kit with sunhood/screen protector, Sony L series battery plate, high-capacity battery (6 hrs), charger, hard carrying case, swivel shoe mount, HDMI cable locks, remote zoom button for focus assist, 2 HDMI cables, AC adapter.



VZUSPG-EXHD Lens Control Monitor Kit *

VZPG-EX

This top of the line pistol-grip control for the Sony PXW-X200, PMW-300, -200, -160, -EX1 and -EX3 utilizes the finest components and has a beautifully machined aluminum housing and articulated clamp.

VZFC-U

Our FC-U manual focus system allows you to pull focus on your Sony PXW-X200 / PMW-300/200/160/EX1/EX3 from the tripod handle.

VZDVRODS

Our affordable, high-quality rods system for HDV cameras enables you to attach matteboxes, focus control systems, wireless adapters, and other accessories.

VZ-M7K

VZM7 monitor deluxe kit with sunhood/screen protector, Sony L series battery plate, high-capacity battery (6 hrs), charger, hard carrying case, swivel shoe mount, HDMI cable locks, remote zoom button for focus assist, 2 HDMI cables, AC adapter.



VZ-UEFZ-PGX Zoom, Electronic Focus, Monitor Kit* for Sony PXW-200, PMW-300

VZPG-EX

This top of the line pistol-grip control for the Sony PXW-X200, PMW-300, -200, -160, -EX1 and -EX3 utilizes the finest components and has a beautifully machined aluminum housing and articulated clamp.

VZEFC2U

The EFC2U is a universal programmable electronic focus control that works with the Canon C100, C300, Sony PXW-X200, PMW-300/200, in addition to Canon, Fujinon, and DSLR lenses.

VZDVRODS

Our affordable, high-quality rods system for HDV cameras enables you to attach matteboxes, focus control systems, wireless adapters, and other accessories.

VZ-M7K

VZM7 monitor deluxe kit with sunhood/screen protector, Sony L series battery plate, high-capacity battery (6 hrs), charger, hard carrying case, swivel shoe mount, HDMI cable locks, remote zoom button for focus assist, 2 HDMI cables, AC adapter.

Wireless Cinema/Broadcast



VZTOC-F1 Wireless Follow Focus

Control focus with absolute precision on virtually any lens with VariZoom's new touchscreen wireless follow focus. This cutting-edge lens drive system is built using advanced control electronics, software and mechanical design that define a new price-performance standard. All parameters adjust quickly with our clean, logical GUI and our powerful motor system auto-calibrates for hassle-free setup. This 1-channel TOC (Total Optical Control) package easily upgrades to a 2- or 3-channel system, and although it employs a top-notch wireless section good to 1000 feet, it can also be connected by cable when desired.



VZTOC-FI2 2 Channel Wireless Follow Focus & Iris

Control focus and iris with absolute precision on virtually any lens with VariZoom's new touchscreen wireless lens drive system. All parameters adjust quickly with our clean, logical GUI and our powerful motor system auto-calibrates for hassle-free setup. This 2-channel TOC (Total Optical Control) package easily upgrades to a 3-channel system, and although it employs a top-notch wireless section good to 1000 feet, it can also be connected by cable when desired or for integration with our Cinema Pro and CP Jr motion control systems for 4 axis repeatable moves.



VZTOC-ZFi2 3 Channel Wireless Follow Focus and Zoom/Iris with 2 motors

Control zoom and focus or iris with absolute precision on virtually any lens with VariZoom's touchscreen wireless lens control. This cutting-edge lens drive system is built using advanced control electronics, software and mechanical design that define a new price-performance standard. All parameters adjust quickly with our clean, logical GUI and our powerful motor system auto-calibrates for hassle-free setup. Although this 3-axis capable system employs a top-notch wireless section good to 1000 feet, it can also be connected by cable when desired or for integration with the Cinema Pro and CP Jr systems for full 5 channel repeatable motion and lens control.



VZTOC-ZFi3 3 Channel Wireless Follow Focus, Iris, Zoom with 3 Motors

Control zoom, focus and iris with absolute precision on virtually any lens with VariZoom's new touchscreen wireless lens control. This cutting-edge lens drive system is built using advanced control electronics, software and mechanical design that define a new price-performance standard. All parameters adjust quickly with our clean, logical GUI and our powerful motor system auto-calibrates for hassle-free setup. Although this 3-axis capable system employs a top-notch wireless section good to 1000 feet, it can also be connected by cable when desired or for integration with the Cinema Pro and CP Jr systems for full 5 channel repeatable motion and lens control.

Accessories for Wireless Cinema/Broadcast



VZTOC-RING
Ring for VZTOC



VZTOC-CTRL
20' control cable for connecting TOC hand unit to Receiver in wired mode, or for connecting TOC hand unit to CP console in wired repeatable mode.



VZTOC-LDMEXT
18" extension cable for TOC lens drive motor.



VZTOC-24VR
24 volt Regulator for TOC receivers (accepts 9-36VDC outputs 24VDC for consistent motor speed)



VZTOC-PWR-D/4
4 Pin Lemo to D-Tap Power Cable for TOC



VZTOC-LDM
Single lens drive motor system for TOC w/ Motor, Rod Clamp (15mm/19mm), and universal gear set.



VZTOC-PWR-XLR/4
XLR power out to TOC power in XLR male to 4 pin 1B Lemo 30"

Remote Focus Controls for Broadcast/DSLR Lenses

VZEFC2 Canon Fujinon Electronic Focus or Iris Control

Designed for use on jibs or other remote applications, this programmable remote focus control for Canon and Fujinon allows the user to adjust focus (or iris) manually or preset up to 5 quick-change positions.

- Pair with any Canon or Fujinon Zoom Control for \$50 discount
- Full Manual Mode for the finest focus adjustments
- Programmable Mode for presetting up to 5 preset focal points
- LCD readout for positioning and programming
- Includes control unit, servo focus bracket, 20' cable, carrying pouch, Canon gear, Fujinon gear, Iris gear, cable straps, rechargeable battery kit
- Works up to 50' (uses common 3.5mm stereo mini-jack cables - 'headphone' type)
- Rechargeable Canon BP-915 style battery



Recommended Extension Cables



VZEXT-EFC20 - 20' Length

VZEFC2U Universal Electronic Focus Control Broadcast & DSLR Lenses

VZEFC2U is the improved MkII version of our universal electronic focus control. The motor mounts to 15mm/19mm rods and includes a universal gear set and clamp-on adapter rings, so you can use this system with nearly any broadcast or DSLR lens with endpoints. Perfect for Canon C100, C300, Sony PXW-200, PMW-300 or any camera using DSLR or broadcast lenses. This system allows for precise, repeatable focusing and allows up to 5 programmable presets for quick and accurate "go-to-marks." The MkII hand unit includes a large focus knob and convenient Canon BP-915 type battery pack. You can also use this unit to control iris on a lens with a no-click ring.

Note: Product requires rails / rods to mount the drive motor, such as our VZDVRods.

- Full Manual Mode for the finest focus adjustments
- Programmable Mode for presetting up to 5 preset focal points
- LCD readout for positioning and programming
- Includes control unit, servo focus bracket, 20' cable, carrying pouch, 32DP gear, Canon gear, Fujinon gear, Iris gear, clamp-on gear ring adapters, cable straps, rechargeable battery kit
- Works up to 50' (uses common 3.5mm stereo mini-jack - 'headphone type')
- Rechargeable Canon BP-915 style battery



Recommended Extension Cables



VZEXT-EFC20 - 20' Length

Accessories



VZEFCU-G32.8
VZEFC-U gear



VZFG BX
Focus block For Canon 16x XL Series
Manual Lenses



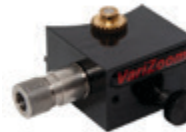
VZFG EAR-95
Gear adapter for
Sony PMW-300/200/EX1/EX3



VZFG BF
Focus gear box for Fujinon



VZDG U
Gear adapter (32DP) for all lenses
without gear teeth



VZFG BC
Focus gear box for Canon



VZEFCU-ADAPTER
This bracket system allows you to
adapt your existing EFC system to
work with any lens by mounting the
motor to this new bracket that can
clamp to any 15/19mm matte box
rods.



VZFG B350K
Focus block for XA 16x8 (Sony 350K)



VZFG B22
Focus gear box (small)

Converter Cables & Straps



VZAV/LANC
Mini Audio/Video to LANC Converter Cable for SONY Handycams



VZF12C8
Fujinon 12-Pin to Canon 8-Pin Converter Cable



VZC8EX
Canon 8-Pin to Sony EX 8-Pin Converter Cable



VZF12F8
Fujinon 12-Pin to Fujinon 8-Pin Converter Cable



VZF8EX
Fujinon 8-Pin to Sony EX 8-Pin Converter Cable



VZF8C8
Fujinon 8-Pin to Canon 8-Pin Converter Cable



VZC8F12
Canon 8-Pin to Fujinon 12-Pin Converter Cable



VZF8F12
Fujinon 8-Pin to Fujinon 12-Pin Converter Cable



VZC8F8
Canon 8-Pin to Fujinon 8-Pin Converter Cable



VZS12
12" Velcro cable straps
8 ct

VZS9
9" Velcro cable straps
8 ct

VZS15
15" Velcro cable straps
8 ct

VZSA
Velcro cable straps
Assorted Lengths
8 ct

VZS6
6" Velcro cable straps
8 ct

Extension Cables



Canon/Fujinon 8 Pin

VZEXT-8/10 - 10' Length
VZEXT-8/20 - 20' Length
VZEXT-8/50 - 50' Length



Fujinon 12 Pin

VZEXT-L10 - 10' Length
VZEXT-L20 - 20' Length
VZEXT-L50 - 50' Length
VZEXT-L100 - 100' Length



Sony/Canon LANC

VZEXT-12/10 - 10' Length
VZEXT-12/20 - 20' Length
VZEXT-12/50 - 50' Length



Sony EX

VZEXT-EX10 - 10' Length
VZEXT-EX20 - 20' Length
VZEXT-EX50 - 50' Length



Panasonic

VZEXT-PZFI-10 - 10' Length
VZEXT-PZFI-20 - 20' Length
VZEXT-PZFI-50 - 50' Length

Varizoom USA

Other products from our professional line:

Camera Sliders

Motion Control Systems/Remote Heads

Camera Cranes/Jibs

Tripods/Monopods and Dollies

Camera Stabilizer Systems

Camera Support Systems

Monitors and Accessories

Batteries and Chargers

LED Lighting

Trusted by thousands of brands globally.

Varizoom products are used by some of the leading companies in the industry including BBC, Intel, Chevron, NBC, National Geographic, Fox News, Microsoft, the U.S. Airforce and Navy, and Discover.

VariZoom USA

Motion Controls

Cranes/Jibs

Sliders

Filmmaking/TV
Sports
Houses of Worship
Schools
Motorsports



www.VariZoom.com

VariZoom has been a leading manufacturer in film and production tools for over two decades. Based and made in the USA is at the core of our commitment to quality. From our full line of Lens Controls to our state of the art motion control systems, and all points in between, VariZoom continues to innovate and bring you the production tools you can afford.

Trusted by thousands of brands globally.

Varizoom products are used by some of the leading companies in the industry including BBC, Intel, Chevron, NBC, National Geographic, Fox News, Microsoft, the U.S. Airforce and Navy, and Discover.

Table of Contents

Remote Pan/Tilt Heads	4
Motion Control Remote Heads	6
Cinema Pro Micro Kits.....	7
Cinema Pro Jr Kits	9
Cinema Pro Kits	11
Motion Control Accessories.....	13
Camera Cranes/Jibs.....	16
SnapCrane Kits	17
Quick Jib Kits.....	20
Solo Jib Kits.....	23
Crane/Jib Accessories	25
Camera Sliders	26

Remote Pan/Tilt Heads

VZMC50 Video Camera Remote Head



The MC50 is the little brother to the MC100, one of the most widely used remote pan/tilt heads in the video world. Using the same high-quality electronics and motors as the MC100, the MC50 is a smaller version for lightweight video cameras and DSLRs. The MC50 allows you to pan and tilt smoothly from distances up to 300 feet away, and its all-metal construction and robust electronics ensure a lifetime of reliable performance.

Features of the MC50

- Handles Cameras up to 12lbs
- Compatible with most cranes and jibs
- Weighs under 9 lbs
- Smooth Swiss-motor analog performance
- Speed and direction control
- Built-in fixed smoothing curve
- Waterproof hardcase
- All aluminum and stainless steel construction



VZMC50-DUAL Video Camera Remote Heads Package

Utilizing the same rugged and field tested electronics and controls that have made the MC100 so popular for years, the MC50 is the lighter duty choice of professionals using smaller HD & DSLR cameras. These lightweight head mounts to nearly any jib or tripod. Our MC50 Dual System can be integrated into permanent AV systems in studios, churches, or auditoriums.

- Controls 2 cameras
- Heads mounts to nearly any jib or tripod
- For cameras up to 12 lbs.

Remote Pan/Tilt Heads



VZMC100 Video Camera Crane Remote Head

The MC100 is an American-made VariZoom original dating back to the early days of the company. This is one of the most widely used remote pan/tilt heads in the video world, and its straightforward, high-quality construction make it the perfect affordable solution for professionals and beginners alike. The MC100 allows you to smoothly pan and tilt from up to 300 feet away, and its rugged build ensures a lifetime of reliable performance. Although many improvements have been made over the years, the basic design hasn't changed. We have hundreds of customers still using their heads from the early 2000s, and we're able to service them because we've kept all the parts interchangeable/upgradeable, and we do it all in-house.

Features of the MC100

- Handles Cameras up to 25lbs
- Compatible with most cranes and jibs
- Weighs under 9 lbs
- Smooth Swiss-motor analog performance
- Independent Speed, Direction and Motor-kill controls for pan and tilt
- Built-in fixed smoothing curve
- Waterproof hardcase
- All aluminum and stainless steel construction



VZMC100-DUAL Video Camera Remote Heads Package

The MC100Dual allows one operator complete motion control over two cameras a hundred or more feet apart. Great for weddings and event videographers. Lightweight head mounts to nearly any jib or tripod and can be integrated into permanent AV systems in studios, churches, or auditoriums.

Features of the MC100

- Controls 2 cameras
- Heads mounts to nearly any jib or tripod
- For cameras up to 25 lbs.

Motion Control Remote Heads

CP Micro Compact Remote Motion Control Head



Using the same control system as our acclaimed CP and CP JR heads, the CP Micro offers the same frame-accurate, fully enclosed drivetrain, high-performance design at a much more affordable price and in a much smaller and lighter package. Ideal for Canon C100 & C300, Sony FS5, DSLRs, and any other compact cameras under 12lbs, the CP Micro sacrifices nothing in quality but is tailored to meet the needs of shooters who need a smaller and lighter package for use with their compact cameras.

Works with all of the CP controls, including pan bars, hand wheels, advanced console, new "River" multi-head 28-axis console, Jibstick Pro, and Jibstick JR.

Specs
Weight: 7 lbs
Dimensions: 13"x6"x4"
Capacity: 12 lbs
Speed: 130 degrees/sec

CPJR Remote Motion Control Head



Upgrade your low-tech head and increase the functionality of your jib system with CinemaPro Jr. motion control camera equipment. When you need precise motion control and your current system just isn't cutting it, our lightweight, yet feature-packed portable remote pan tilt head systems are exactly what you need.

Features of all CinemaPro Jr. remote camera head kits include:

- Fits most cameras up to 35 lbs.
- Remote heads are just 13 pounds
- High-performance pan/zoom/tilt/focus

Specs
Weight: 13 lbs
Dimensions: 20.5"x11.3"x6"
Capacity: 35 lbs
Speed: 130 degrees/sec

CinemaPro Motion Control Head



DPs and camera operators are choosing CinemaPro motion control camera equipment for good reason – it offers high-quality performance in a user-friendly package.

Features include:

- Works well with a wide variety of cameras
- Easy to set up and start shooting with
- Streamlined functionality
- High-quality pan/zoom/tilt/focus
- Full slip rings
- Powerful yet quiet drivetrains

Specs
Weight: 21 lbs
Dimensions: 19.5"x12"x6"
Capacity: 50 lbs
Speed: 210 degrees/sec

CP Micro Kits



VZCP-MICRO-K1 Remote Head w/ Cinema Hand Wheels

Paired with cinema-style hand wheels, the CP Micro sets a new standard for value in true motion control. At only 7 pounds, the CP Micro is ideal for cranes and portable remote applications, and its superior programming capability and rock-solid electromechanical performance make it a perfect upgrade for the low-tech heads found on most jib systems. The enclosed, slip-ring based drivetrain provides no-maintenance, reliable performance in nearly any environment. This kit includes CP Micro head, cinema-style hand-wheels control, limited-software advanced control console w/ joystick input, control cable, AC adapter, power extension, and waterproof hard carrying case.



VZCP-MICRO-K2 Remote Head w/ Pan Bars

Paired with our broadcast-style encoded pan bars, the Cinema Pro Micro offers breathtaking performance and control in an intuitive package. At only 7 pounds, the CP Micro is ideal for cranes and portable remote applications, and its superior programming capability and rock-solid electromechanical performance make it a perfect upgrade for the low-tech heads found on most jib systems. The enclosed, slip-ring based drivetrain provides no-maintenance, reliable performance in nearly any environment. This kit includes CP Micro head, pan bars control, limited-software advanced control console w/ joystick input, control cable, AC adapter, power extension, waterproof hard carrying case.



VZCP-MICRO-K3 Remote Head w/ Console

Built with powerful electronics and software, the Cinema Pro Micro allows operators to customize motion and lens parameters through our portable console and repeat ultra-slow or high-speed moves with absolute precision. At only 7 pounds, the CP Micro is ideal for cranes and portable remote applications, and its superior programming capability and rock-solid electromechanical performance make it a perfect upgrade for the low-tech heads found on most jib systems. The enclosed, slip-ring based drivetrain provides no-maintenance, reliable performance in nearly any environment. This kit includes CP Micro head, limited-software advanced control console w/ joystick input, control cable, AC adapter, power extension, waterproof hard carrying case.



VZCP-MICRO-K4 Remote Head w/ Jibstick Pro

With our ergonomic Jibstick Pro controller, the CP Micro-K4 offers high-performance pan/tilt/zoom/focus in an incredibly user-friendly package (note: zoom & focus require optional cabling based on your lens/camera). With all the speed and stability of the advanced motion control kits, but no menus or complex settings, and far fewer buttons and options, the CP Micro-K4 goes to work with minimal training and setup. At only 7 pounds, the CP Micro is ideal for cranes and portable remote applications, and its superior programming capability and rock-solid electromechanical performance make it a perfect upgrade for the low-tech heads found on most jib systems. The enclosed, slip-ring based drivetrain provides no-maintenance, reliable performance in nearly any environment. The K4 control offers a professional long-throw joystick mounted in a palmrest housing, on-the-fly custom motion limits, integral lens control via plug-in pistol-grip zoom/focus remote, speed & smoothing control, motor disable, pan/tilt/zoom/focus direction switches, & USB interface for advanced setup and firmware updates. This kit includes CP Micro head, Jibstick Pro, plug-in zoom/focus control, control cable, AC adapter, power extension, waterproof hard carrying case.



VZCP-MICRO-K5 Remote Head w/ Jibstick Jr

Open the door to big productions with VariZoom's new affordable CPM-K5. The high production values offered by our advanced motion control heads are now within reach of independent shooters and production companies at all levels. With this kit, VariZoom / mocoDyne offers an entry-level price point for videographers to get a sophisticated and powerful motion control system that can be easily upgraded as you make more money with your productions. The CPM-K5 includes the CP Micro head and Jibstick Jr control unit using electromechanical design from multi-Academy Award winning engineers. With this system, you are getting the same high-performance exoskeletal motion control head that comes with the more expensive kits, but the Jibstick Jr is a streamlined manual controller that allows precise, tunable pan and tilt motions. No other system in this price range offers the robust, feature-packed, precision-made, and frame-accurate capable design of the Cinema Pro Micro. For the price of another system with lesser capability and virtually no upgrade path, you can have a starter kit for a motion-picture quality system. System Includes: CP Micro remote head, Jibstick Jr. controller, control cable, power extension, power supply, case.

CP JR Kits



VZCP-JR-K1 Remote Head w/ Cinema Hand Wheels

Paired with cinema-style hand wheels, the CP JR sets a new standard for value in true motion control. At only 13 pounds, the CP JR is ideal for cranes and portable remote applications, and its superior programming capability and rock-solid electromechanical performance make it a perfect upgrade for the low-tech heads found on most jib systems. The enclosed, slip-ring based drivetrain provides no-maintenance, reliable performance in nearly any environment. This kit includes CP JR head, cinema-style hand-wheels control, limited-software advanced control console w/ joystick input, control cable, AC adapter, power extension, and waterproof hard carrying case.



VZCP-JR-K2 Remote Head w/ Pan Bars

Paired with our broadcast-style encoded pan bars, the CP JR offers breathtaking performance and control in an intuitive package. At only 13 pounds, the CP JR is ideal for cranes and portable remote applications, and its superior programming capability and rock-solid electromechanical performance make it a perfect upgrade for the low-tech heads found on most jib systems. The enclosed, slip-ring based drivetrain provides no-maintenance, reliable performance in nearly any environment. This kit includes CP JR head, pan bars control, limited-software advanced control console w/ joystick input, control cable, AC adapter, power extension, waterproof hard carrying case.



VZCP-JR-K3 Remote Head w/ Console

Built with powerful electronics and software, the CP JR allows operators to customize motion and lens parameters through our portable console and repeat ultra-slow or high-speed moves with absolute precision. At only 13 pounds, the CP JR is ideal for cranes and portable remote applications, and its superior programming capability and rock-solid electromechanical performance make it a perfect upgrade for the low-tech heads found on most jib systems. The enclosed, slip-ring based drivetrain provides no-maintenance, reliable performance in nearly any environment. This kit includes CP JR head, limited-software advanced control console w/ joystick input, control cable, AC adapter, power extension, waterproof hard carrying case.

CP JR Kits



VZCP-JR-K4 Cinema Pro Jr Remote Head w/ Joystick

With our ergonomic Jibstick Pro controller, the CP JR-K4 offers high-performance pan/tilt/zoom/focus in an incredibly user-friendly package (note: zoom & focus require optional cabling based on your lens/camera). With all the speed and stability of the advanced motion control kits, but no menus or complex settings, and far fewer buttons and options, the CP JR-K4 goes to work with minimal training and setup. At only 13 pounds, the CP JR is ideal for cranes and portable remote applications, and its superior programming capability and rock-solid electromechanical performance make it a perfect upgrade for the low-tech heads found on most jib systems. The enclosed, slip-ring based drivetrain provides no-maintenance, reliable performance in nearly any environment. The K4 control offers a professional long-throw joystick mounted in a palmrest housing, on-the-fly custom motion limits, integral lens control via plug-in pistol-grip zoom/focus remote, speed & smoothing control, motor disable, pan/tilt/zoom/focus direction switches, & USB interface for advanced setup and firmware updates. This kit includes CP Jr head, Jibstick Pro, plug-in zoom/focus control, control cable, AC adapter, power extension, waterproof hard carrying case.



VZCINEMAPRO-JR-K5 Cinema Pro Jr Remote Head w/ Jibstick Jr

Open the door to big productions with VariZoom's new affordable CPJ-K5. The high production values offered by our advanced motion control heads are now within reach of independent shooters and production companies at all levels. With this kit, VariZoom / mocoDyne offers an entry-level price point for videographers to get a sophisticated and powerful motion control system that can be easily upgraded as you make more money with your productions. The CPJ-K5 includes the CinemaPro Jr head and Jibstick Jr control unit using electromechanical design from multi-Academy Award winning engineers. With this system, you are getting the same high-performance exoskeletal motion control head that comes with the more expensive kits, but the Jibstick Jr is a streamlined manual controller that allows precise, tunable pan and tilt motions. No other system in this price range offers the robust, feature-packed, precision-made, and frame-accurate capable design of the CP JR. For the price of another system with lesser capability and virtually no upgrade path, you can have a starter kit for a motion-picture quality system. System Includes: CP JR remote head, Jibstick Jr. controller, control cable, power extension, power supply, case.

Cinema Pro Kits



VZCP-K1 Cinema Pro Remote Head w/ Hand Wheels & Console

Paired with hand wheels for discrete cinema style pan & tilt, the Cinema Pro-K1 offers extremely stable and dynamic true motion control capability in a compact, affordable package. Utilizing powerful but quiet drivetrains and full slip rings, the Cinema Pro head is capable of tracking the most delicate to the most intense actions with equal grace. Built-in lens control, repeatable 5-axis capability, advanced intervalometer, and full motion control parameters are but a few of the highlights. Designed and manufactured in the USA, and backed by outstanding customer support, this system has made a name in the industry for a reason. Cinemapro-K1 Includes Control Console, Encoded Hand Wheels, Control Cable, Pwr Cable, Pwr Supply & Rolling Hard Case.



VZCINEMAPRO-K2 CinemaPro Remote Head w/ Pan Bars

The Cinema Pro-K2 includes broadcast-style pan bars for a very intuitive, but high-performance method of remotely operating a camera with minimal learning curve. This extremely stable and dynamic true motion control system gives complete pan/tilt/zoom/focus control from the handles of encoded pan bars that work just like a fluid head tripod. Utilizing powerful but quiet drivetrains and full slip rings, the Cinema Pro head is capable of tracking the most delicate to the most intense actions with equal grace. Built-in lens control, repeatable 5-axis capability, advanced intervalometer, and full motion control parameters are but a few of the highlights. Designed and manufactured in the USA, and backed by outstanding customer support, this system has made a name in the industry for a reason. Cinemapro-K2 Includes Control Console, Encoded Pan Bars, Control Cable, Pwr Cable, Pwr Supply & Rolling Hard Case.



VZCINEMAPRO-K3 Cinema Pro Remote Head w/ Advanced Control Console

This extremely stable and dynamic true motion control system gives complete pan/tilt/zoom/focus control from a compact control console. Utilizing powerful but quiet drivetrains and full slip rings, the Cinema Pro head is capable of tracking the most delicate to the most intense actions with equal grace. Built-in lens control, repeatable 5-axis capability, advanced intervalometer, and full motion control parameters are but a few of the highlights. Designed and manufactured in the USA, and backed by outstanding customer support, this system has made a name in the industry for a reason. Cinemapro-K3 Includes Control Console, 50' Control Cable, 30' Pwr Cable, Pwr Supply & Rolling Hard Case. Now Available:



VZCINEMAPRO-K4 Cinema Pro Remote Head w/ Joystick

With our ergonomic pro Jibstick controller, the Cinema Pro-K4 offers high-performance pan/tilt/zoom/focus in an incredibly user-friendly package. With all the speed and stability of the advanced motion control kits, but no menus or complex settings, and far fewer buttons and options, the Cinema Pro-K4 goes to work with minimal training and setup. Utilizing powerful but quiet drivetrains and full slip rings, the Cinema Pro head is capable of tracking the most delicate to the most intense actions with equal grace. The Pro Jibstick controller does not allow record/playback, intervalometer, go-to-marks, or camera sync. The K4 control offers on-the-fly custom motion limits, independent pan & tilt speed control, smoothing control, motor power toggle, independent response direction switches for pan/tilt/zoom/focus, included analog zoom/focus remote, digital and analog lens control input, on-the fly zoom centering, PC-compatible USB interface for advanced setup and firmware updates.



VZCINEMAPRO-K5 Cinema Pro Remote Head w/ Jibstick Jr

Open the door to big productions with VariZoom's new affordable CinemaPro-K5. The high production values offered by our advanced motion control heads are now within reach of independent shooters and production companies at all levels. With this kit, VariZoom / mocoDyne offers an entry-level price point for videographers to get a sophisticated and powerful motion control system that can be easily upgraded as you make more money with your productions. The CP-K5 includes the CinemaPro head and Jibstick Jr control unit using electromechanical design from multi-Academy Award winning engineers. With this system, you are getting the same high-performance exoskeletal motion control head that comes with the more expensive kits, but the Jibstick Jr is a streamlined manual controller that allows precise, tunable pan and tilt motions. No other system in this price range offers the robust, feature-packed, precision-made, and frame-accurate capable design of the Cinema Pro. For the price of another system with lesser capability and virtually no upgrade path, you can have a starter kit for a motion-picture quality system. System Includes: CinemaPro remote head, Jibstick Jr. controller, 50' control cable, 30' XLR power extension, power supply, case.

Motion Control Accessories



VZTOC-ZFi3 3 Channel Wireless Follow Focus, Iris, Zoom w/3 Motors

Control zoom, focus and iris with absolute precision on virtually any lens with VariZoom's new touchscreen wireless lens control. This cutting-edge lens drive system is built using advanced control electronics, software and mechanical design that define a new price-performance standard. All parameters adjust quickly with our clean, logical GUI and our powerful motor system auto-calibrates for hassle-free setup. Although this 3-axis capable system employs a top-notch wireless section good to 1000 feet, it can also be connected by cable when desired or for integration with the Cinema Pro and CP Jr systems for full 5 channel repeatable motion and lens control. Notes: 1) One receiver power cable included at no extra charge, but customer must specify the needed cable type (XLR, D-tap, etc.). 2) Record start/stop cable is optional (additional cost) and connection type must be specified.

- Controls 3 Channels
- Wirelessly control Zoom/Focus/Iris from 1000'
- Wireless touchscreen remote



VZTOC-LDM

Single lens drive motor system for TOC w/ Motor, Rod Clamp (15mm/19mm), and universal gear set.



VZTOC-3A

Lens drive box for 3 TOC motors.



TOCZFI3

Wireless lens control hand unit

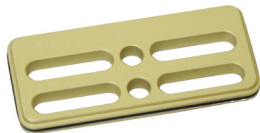
Motion Control Accessories

"River" Control Console - 4 Camera x 7-Axis



Perfect for multi-camera systems in churches, auditoriums, concerts and other live events, this new system is the result of years of motion control design expertise. Control up to four 7-axis remote camera systems using the touchscreen interface at a frame-accurate level for repeat-pass, live control, and variable-speed playback. Each of the 4 remote systems can run independently or simultaneously and accommodate pan, tilt, zoom, focus, iris, track and boom axes. The River console is the most cost-effective way to accurately control 4 remote camera systems at a cinematic or broadcast level.

- Control up to 4 remote camera systems - Pan / Tilt / Zoom / Focus / Iris / Track/Dolly / Boom
- Works with existing CinemaPro and CP JR heads, as well as new CP Micro
- Touchscreen interface for intuitive operation
- Fully parametric setup for great flexibility and "idiot-proofing"
- Either one operator can control all 4 cameras or plug in peripheral joysticks slaved to the main console for multi-operator position-only control
- Utilizes only the best-quality components and software based on years of field operation
- Also available soon in a more compact single-camera 7-axis version for Pan/Tilt/Zoom/Focus/Iris/Track/Boom



VZCP-T23
1/8 Offset Plate Nodal
line offset insert plate



VZCP-T24
1/4 Offset Plate Nodal
line offset insert plate



VZCP-T35
Adapts Mitchell mount
to Jimmy Jib style
mount



VZCP-24VR
24V portable power
station for CinemaPro
line



VZCP-T30
Allows for wireless
operation between
CinemaPro Head and Full
function remote for up to 1
Mile line of sight.

Motion Control Accessories

VZCP-T21

Adapts CinemaPro Mitchell mount to original style Mitchell plates

VZCP-C12

CinemaPro cable coupler

VZCP-T19

Base adapter with 100mm euro ball

VZEXTMC20

High-quality, ultra-flexible, shielded extension cables for VZ-MC50 & 100 Pan & Tilt systems.

VZEXTMC50

50' Extension for VZ-MC50 & VZ-MC100

VZEXTMC100

High-quality, ultra-flexible, shielded extension cables for VZ-MC50 & 100 Pan & Tilt systems.

VZTOC-CTRL

Connects TOC hand unit to receiver for wired mode

VZTOC-CONC

Connects TOC HU to CinemaPro's control console

VZMC100-CASE

Custom hard case

VZCP-C02

50' CONTROL CABLE FOR CP/CPJR

VZTOC-COMC

Connects TOC to CinemaPro head

VZCP-C08

Connects CinemaPro head to camera for record start/stop or camera sync trigger.

VZCP-T18

Mitchell spud and nut mounting hardware

VZCP-C08

Connects CinemaPro head to camera for record

VZCP-C05

75' XLR power cable from Cinemapro P.S. to Cinemapro head

VZCP-C11

CinemaPro Arri 24V DC power cable

VZCP-C03

Cinemapro Control cable - 100 ft

VZCP-C13

Power cable for Panaflex

VZCP-T13

Super bright LED bloop-sync light for camera sync. Includes cable

VZCP-T25

Rises CinemaPro head 2" for additional camera or lens clearance

VZCP-T27

Rises CinemaPro head 5" for additional camera or lens clearance

VZCP-C15

Connects Preston MDR1 or MDR2 to Cinemapro head

VZCP-C09

Connects CinemaPro lens controller to zoom servo on ENG lenses

VZCP-C10

Allows camera power to pass through the slip rings of CinemaPro and CPJR

VZCP-T09

Zoom/Focus controller specifically for CinemaPro VZCP-T12 encoded pan bars attaches to tripod handles.

VZJIBSTICKJR

Compact, streamlined thumb joystick controller for CinemaPro and CinemaPro Jr.

JIBSTICK PRO

Professional Long-Throw Joystick for Pan & Tilt

VZCP-T12

Cinemapro Encoded Pan Bar Encoded fluid head w/ 100 mm ball. Includes zoom/reset & focus controls. Works with Cinemapro advanced controller.

VZCP-T11

Cinemapro Two axis Hand Wheel box w/ 100mm ball

Camera Cranes/Jibs

SnapCrane



The VariZoom SnapCrane allows execution of high-level or sweeping shots while still keeping the crowd and crew safe. Using high-quality stainless hardware and precision-machined dovetail-locking sections, the SnapCrane is outfitted with the best in materials and features. We stock 9ft, 12ft, and 16ft versions to meet any filming requirement, and all include our custom heavy-duty dolly and tripod. The 16ft unit can be configured in up to 5 lengths, and the smaller units can be easily upgraded. Replacement parts are readily available and we offer excellent customer support long after a purchase is made. All models set up quickly and allow for a variety of options.

QuickJib



VariZoom QuickJibs meet and exceed all the criteria for quality, convenience and value. QuickJib models are a perfect balance of quality, durability, and affordable pricing. VariZoom QuickJibs are perfect for those who need a jib/crane but don't want to spend the money for our more costly SnapCrane. At VariZoom, we offer a wide range of crane and jib packages including remote heads, and they can be purchased a la carte or in discounted bundles. Our QuickJib packages are so compact they can fit in the back of a Honda Civic! Our jibs extend easily and none of our extension kits require tools for assembly. VariZoom QuickJibs can be assembled in minutes using lanyard-attached stainless aircraft pins, unlike the competitors who require you to have an extensive set of tools and matching bolts. Whether you need a complete jib setup, or just a dolly or arm, you can browse our selection and find something that meets your needs and budget. We offer excellent customer support and we stand by our products years after the warranty expires.

Solo Jib



The VariZoom Solo compact jib and slider dolly systems are low cost, lightweight, high quality and made for travel and compact storage. Videographers travel the world with this system, as it packs into compact protective cases. While lightweight and compact, the construction is robust beyond the standards of competing products. The result is excellent performance and reliability, and when the Solo Jib is combined with the Solo Slider Dolly, you have the most versatile system in its class. Allowing for compound motions of track, boom and pan, the Solo system enables complicated moves with a single operator. Take a good look at the details, including a professional soft-braking system on the jib's pan/tilt head, rugged protective cases, and tool-free modular design.

SnapCrane Kits

VZSNAPCRANE9 9' Camera Crane/Jib



Includes VZ-TCR100 Tripod & VZ-DCR100 Dolly. The SnapCrane has modular lightweight construction, stainless quick-release pins with lanyards, locking dovetail joints, and superior craftsmanship.

- 9' Film & Video Crane incl. VZ-TCR100 Tripod & VZ-D100 Dolly
- Standard Crane Configuration - 10'9" Max Cam Ht. / 9' Vertical Movement
- Possible to build 2 configurations
- TCR100 Tripod
- Custom Free-Wheel Dolly
- Crane Soft Case - Soft Case for easy, protected transport

VZSNAPCRANE12 12' Camera Crane/Jib



Includes VZ-TCR100 Tripod & VZ-DCR100 Dolly. The SnapCrane has modular lightweight construction, stainless quick-release pins with lanyards, locking dovetail joints, and superior craftsmanship.

- 12' Film & Video Crane incl. VZ-TCR100 Tripod & VZ-D100 Dolly
- Standard Crane Configuration - 14'3" Max Cam Ht. / 12'6" Vertical Movement
- Possible to build 3 length configurations
- TCR100 Tripod
- Custom Free-Wheel Dolly
- Crane Soft Case - Soft Case for easy, protected transport

VZSNAPCRANE16 16' Camera Crane/Jib



Includes 16' SnapCrane, VZ-TCR100 Tripod, and VZ-DCR100 Dolly. The SnapCrane has modular lightweight construction, stainless quick-release pins with lanyards, locking dovetail joints, and superior craftsmanship.

- 16' Film & Video Crane incl. VZ-TCR100 Tripod & VZ-D100 Dolly
- Crane Configuration - 18'3" Max Cam Ht. / 16'6" Vertical Movement
- Possible to build all 4 length configurations
- TCR100 Tripod
- Custom Free-Wheel Dolly
- Crane Soft Case - Soft Case for easy, protected transport

SnapCrane Kits



VZSNAPCRANE9-100 9' Camera Crane/Jib w/ Remote Head

Includes VZ-TCR100 Tripod & VZ-DCR100 Dolly, & MC100. The SnapCrane has modular lightweight construction, stainless quick-release pins with lanyards, locking dovetail joints, and superior craftsmanship

- 9ft Crane
- Pan/Tilt Base & Brake System
- Machined Dovetail Joints
- Deluxe Quick-Release Pins
- Crane Case
- TCR100 Crane Tripod



VZSNAPCRANE12-100 12' Camera Crane/Jib w/ Remote Head

Includes VZ-TCR100 Tripod & VZ-DCR100 Dolly, & MC100. The SnapCrane has modular lightweight construction, stainless quick-release pins with lanyards, locking dovetail joints, and superior craftsmanship.

- 12ft Crane
- Pan/Tilt Base & Brake System
- Machined Dovetail Joints
- Deluxe Quick-Release Pins
- Crane Case
- TCR100 Crane Tripod



VZSNAPCRANE16-100 16' Camera Crane/Jib w/ Remote Head

Includes VZ-TCR100 Tripod & VZ-DCR100 Dolly, & MC100. The SnapCrane has modular lightweight construction, stainless quick-release pins with lanyards, locking dovetail joints, and superior craftsmanship.

- 16ft Crane
- Pan/Tilt Base & Brake System
- Machined Dovetail Joints
- Deluxe Quick-Release Pins
- Crane Case
- TCR100 Crane Tripod

SnapCrane Kits

VZSNAPCRANE16-CPJR Camera Crane/Jib w/ Remote Motion Control Head



This crane/remote head kit combines the SnapCrane 16 & CPJR-K5 high-performance remote head for instant savings of \$500. The CPJR-K5 features a compact video-game type thumb joystick for pan/tilt control, as well as speed, smoothing, deadband and direction controls. The SnapCrane-16 builds to 4 different lengths with no tools and the CPJR head sets up in minutes and performs with the best heads on the market.

- VZCINEMAPROJR-K5 high-performance remote pan/tilt head
- 18.25ft max height
- 15.5ft reach
- High-capacity fixed-leg tripod
- Heavy-duty folding 3-wheel dolly
- Dovetail-locking sections w/ tool-free setup
- Carrying bags included

VZSNAPCRANE16-CPJR2 Camera Crane/Jib w/ Remote Motion Control Head



This crane/remote head kit combines the SnapCrane 16 & CPJR-K4 high-performance remote head for instant savings of \$900. The CPJR-K4 includes a professional long-throw joystick and built-in lens control, so you have remote control of pan, tilt, zoom and focus. Other features include user-defined soft motion limits, smoothing, speed & direction control, joystick deadband, motor disable and USB interface. The SnapCrane-16 builds to 4 different lengths with no tools and the CPJR head sets up in minutes and performs with the best heads on the market.

- VZCINEMAPROJR-K4 high-performance remote pan/tilt head
- Includes Pro Joystick controller w/ built-in zoom/focus
- 18.25ft max height
- 15.5ft reach
- High-capacity fixed-leg tripod
- Heavy-duty folding 3-wheel dolly
- Dovetail-locking sections w/ tool-free setup
- Carrying bags included

VZSNAPCRANE16-CPJR3 Camera Crane/Jib w/ Remote Motion Control Head



This crane/remote head kit combines the SnapCrane 16 & CPJR-K3 high-performance remote head for instant savings of \$1700. The CPJR-K3 Incorporating such high-end features as precision enclosed drivetrain, pan slip ring, recordable/repeatable motion control, built-in zoom/focus control, soft limits, and full parametric motion control settings, the Cinema Pro Jr represents a new standard for lightweight, cost-effective pan & tilt motion control heads. Adding to its appeal is the seamless upgrade path for increased programming capability, multiple control input options, and compatibility with an array of existing Cinema Pro accessories. The SnapCrane-16 builds to 4 different lengths with no tools and the CPJR head sets up in minutes.

- VZCINEMAPROJR-K3 high-performance repeatable pan/tilt head
- Includes Advanced Control Console w/ motion record and playback
- 18.25ft max height
- 15.5ft reach
- High-capacity fixed-leg tripod
- Heavy-duty folding 3-wheel dolly
- Dovetail-locking sections w/ tool-free setup
- Carrying bags included

Quick Jib Kits



VZQUICKJIB Camera Crane/Jib

The QuickJib (jib only) is our new low-cost, high-performance jib for cameras up to 50lbs. Easy to assemble in two different lengths, this compact and portable unit is ideal for indoor, outdoor, and studio applications at any budget.

- QuickJib arm only
- 10ft max height
- 5ft reach
- 50lbs capacity
- Telescoping tail for counterweight
- Includes carrying bag



VZQUICKJIB2 12' Camera Crane/Jib

QuickJib (Jib only) and Jib Extension.

- Extended QuickJib arm only
- 13.75ft max camera height
- 9.5ft reach
- 30lbs capacity extended (50lbs short mode)
- Telescoping tail for counterweight
- Includes carrying bag



VZQUICKJIBKIT Camera Crane/Jib

QuickJib Kit includes Jib, DCR100 Dolly and TCR100 Tripod.

- Fixed leg, high-capacity tripod
- Heavy-duty folding 3-wheel dolly
- 10ft max height
- 5ft reach
- 50lbs capacity
- Telescoping tail for counterweight
- Includes carrying bag

Quick Jib Kits



VZQUICKJIB2KIT Jib w/ Extension

QuickJib Kit includes Jib w/ extension, DCR100 Dolly & TCR100 Tripod
VariZoom jibs are professional tools with quick setup, long-term reliability, and outstanding performance.

- Includes extended Quickjib arm, heavy duty tripod and dolly
- Fixed leg, high-capacity tripod
- Heavy-duty folding 3-wheel dolly
- 13.75ft max height
- 9.5ft reach
- 30lbs capacity extended (50lbs short mode)
- Telescoping tail for counterweight
- Includes carrying bags



VZQUICKJIBKIT-50 Crane/Jib w/ Remote Head

QuickJib Kit includes Jib, DCR100 Dolly, TCR100 tripod, and MC50 Pan/Tilt head.

- Includes standard Quickjib arm, VZMC50 remote pan/tilt head, heavy duty tripod, and dolly
- VZMC50 pan tilt head for smooth motorized control (cameras up to 12lbs)
- Fixed leg, high-capacity tripod
- Heavy-duty folding 3-wheel dolly
- 10ft max height
- 5ft reach
- Telescoping tail for counterweight
- Includes carrying bags



VZQUICKJIB2KIT-50 Crane/Jib w/ Remote Head

QuickJib Kit includes jib w/ Extension, DCR100 Dolly , TCR100 Tripod, & MC50 Pan/Tilt head.

- Includes extended Quickjib arm, VZMC50 remote pan/tilt head, heavy duty tripod, and dolly
- VZMC50 pan tilt head for smooth motorized control (cameras up to 12lbs)
- Fixed leg, high-capacity tripod
- Heavy-duty folding 3-wheel dolly
- 13.75ft max height
- 9.5ft reach
- Telescoping tail for counterweight
- Includes carrying bags

Quick Jib Kits



VZQUICKJIBKIT-100 Camera Crane/Jib w/ Remote Head

QuickJib Kit includes jib, DCR100 dolly, TCR100 tripod, and MC100 Pan/Tilt head.

- Includes standard Quickjib arm, VZMC100 remote pan/tilt head, heavy duty tripod, and dolly
- VZMC100 pan tilt head for smooth motorized control (cameras up to 25lbs)
- Fixed leg, high-capacity tripod
- Heavy-duty folding 3-wheel dolly
- 10ft max height
- 5ft reach
- Telescoping tail for counterweight
- Includes carrying bags



VZQUICKJIB2KIT-100 Camera Crane/Jib w/ Remote Head

QuickJib Kit includes, jib w/ extension, DCR100 Dolly, TCR100 Tripod & MC100 pan/tilt head. VariZoom jibs are professional tools with quick setup, long-term reliability, and outstanding performance. Look closely to see the finer details of our thoughtful design, including tool-free assembly and stainless quick-release pins attached by lanyard so they will never be lost.

- Includes extended Quickjib arm, VZMC100 remote pan/tilt head, heavy duty tripod, and dolly
- VZMC100 pan tilt head for smooth motorized control (cameras up to 25lbs)
- Fixed leg, high-capacity tripod
- Heavy-duty folding 3-wheel dolly
- 13.75ft max height
- 9.5ft reach
- Telescoping tail for counterweight
- Includes carrying bags



VZQJ2K-CPJ Camera Crane/Jib w/ CPJR Remote Motion Control Head

QuickJib Kit includes, jib w/ extension, DCR100 Dolly, TCR100 Tripod & CinemaProJr-K4 pan/tilt head. VariZoom jibs are professional tools with quick setup, long-term reliability, and outstanding performance. Look closely to see the finer details of our thoughtful design, including tool-free assembly and stainless quick-release pins attached by lanyard so they will never be lost.

- Includes extended Quickjib arm, VZCINEMAPROJR-K4 remote pan/tilt head, heavy duty tripod, and dolly
- VZCPJR-K4 pan tilt head for smooth motorized control (cameras up to 35lbs)
- Fixed leg, high-capacity tripod
- Heavy-duty folding 3-wheel dolly
- 13.75ft max height
- 9.5ft reach
- Telescoping tail for counterweight
- Includes carrying bags

Solo Jib Kits



SOLO JIB AL Camera Jib/Camera Crane

The Solo Jib-AL is an ultra-portable, lightweight aluminum jib with a 2-stage telescoping arm that provides up to 9.2 ft of height, but fits into a compact case only 38" long. The Solo Jib works with nearly any tripod, and it offers a range of use normally found only on more expensive, bulkier units. Special features include soft-stop pan and tilt brakes so you can fix the position of the jib without danger of tipping over, as well as a telescoping tail for counterweight adjustment. The Solo Jib is a perfect addition to VariZoom's VZTK75A tripod, and when paired with the Solo Slider Dolly, you have a really dynamic acquisition tool for beautiful, kinetic imagery.

- Aluminum Jib
- 7lb camera capacity
- Max height: 9ft.
- 4.2 ft reach



SOLO JIB CF Camera Jib/Camera Crane

The Solo Jib-CF is an ultra-portable, lightweight carbon fiber jib with a 2-stage telescoping arm that provides up to 9.2 ft of height, but fits into a compact case only 38" long. The carbon fiber construction makes the unit stiffer and even lighter than the aluminum version. The Solo Jib works with nearly any tripod, and it offers a range of use normally found only on more expensive, bulkier units. Special features include soft-stop pan and tilt brakes so you can fix the position of the jib without danger of tipping over, as well as a telescoping tail for counterweight adjustment. The Solo Jib is a perfect addition to VariZoom's VZTK75A tripod, and when paired with the Solo Slider Dolly, you have a really dynamic acquisition tool for beautiful, kinetic imagery.

- Carbon fiber Jib
- 7lb camera capacity
- Max height: 9ft
- 4.2ft reach



SOLO SLIDER DOLLY

The Solo Slider Dolly is a one-of-a-kind system the combines all the benefits of a track dolly with the portable, flexible nature of a slider system. The system will accommodate nearly any tripod from a heavy-duty 100mm unit down to a mini tripod / hi hat, and the track system sets up in 5 increments up to 16 ft. The specially designed wheels enable smooth and completely silent operation, and the included underpadding allows you to set up the track on nearly any surface, including grass, gravel, carpet, tile, etc. The Solo Slider Dolly eliminates the need for a separate dolly and slider by combining the functions of both into one device, and the entire system fits into a single compact carrying case. Add a VZTK75A and/or a Solo Jib for greatly expanded capability.

- 16' track
- Foam underpad
- Folding dolly
- Max Load: 45lbs
- Includes custom soft-hard case

Solo Jib Kits



SOLO SLIDER DOLLY Kit

This kit adds the popular VZTK75A tripod system to the the Solo Slider Dolly, a one-of-a-kind system the combines all the benefits of a track dolly with the portable, flexible nature of a slider system. The kit gives you a turnkey system for fluid pan/tilt/tracking shots at a height range of 33" to 67", and the track sets up in 5 increments up to 16 ft. The specially designed wheels enable smooth and completely silent operation, and the included underpadding allows you to set up the track on nearly any surface, including grass, gravel, carpet, tile, etc. The Solo Slider Dolly eliminates the need for a separate dolly and slider by combining the functions of both into one device, and the entire system fits into 2 compact carrying cases.

- 16' track
- Foam underpad
- Folding dolly
- VZTK75A tripod
- Includes custom soft-hard case

SOLO CAMERA JIB Camera Crane Kit (Aluminum)



Aluminum Jib + Tripod + Slider Dolly - This kit gives you a turnkey system for fluid pan/tilt/tracking/boom shots that offers a multitude of creative possibilities and a really dynamic acquisition tool for beautiful, kinetic imagery. The Solo Jib-AL is an ultra-portable, lightweight aluminum jib with a 2-stage telescoping arm that provides up to 9.2 ft of height, but fits into a compact case. Special features include soft-stop pan and tilt brakes so you can fix the position of the jib without danger of tipping over, as well as a telescoping tail for counterweight adjustment. The Solo Slider Dolly eliminates the need for a separate dolly and slider by combining the functions of both into one device. The specially designed wheels enable smooth and completely silent operation, and the included underpadding allows you to set up the track on nearly any surface, including grass, gravel, carpet, tile, etc. The entire dolly/tripod/jib system fits into 3 cases for easy transport, and setup is achieved without tools by one person in a matter of minutes.

- Aluminum jib
- 7lb camera capacity
- Max height: 9ft.
- Track length: 16ft.

SOLO CAMERA JIB Camera Crane Kit (Carbon Fiber)



Carbon Fiber Jib + Tripod + Slider Dolly - This kit gives you a turnkey system for fluid pan/tilt/tracking/boom shots that offers a multitude of creative possibilities and a really dynamic acquisition tool for beautiful, kinetic imagery. The Solo Jib-CF is an ultra-portable, lightweight carbon fiber jib with a 2-stage telescoping arm that provides up to 9.2 ft of height, but fits into a compact case. Special features include soft-stop pan and tilt brakes so you can fix the position of the jib without danger of tipping over, as well as a telescoping tail for counterweight adjustment. The Solo Slider Dolly eliminates the need for a separate dolly and slider by combining the functions of both into one device. The specially designed wheels enable smooth and completely silent operation, and the included underpadding allows you to set up the track on nearly any surface, including grass, gravel, carpet, tile, etc. The entire dolly/tripod/jib system fits into 3 cases for easy transport, and setup is achieved without tools by one person in a matter of minutes.

- Includes jib, track, tripod, & dolly
- Carbon fiber jib
- 7lb camera capacity
- Max height: 9ft.
- Track length: 16ft.

Crane/Jib Accessories

SOLOGRIP

Hand grip for rear of Solo Jib

VZJIBGRIP

Jib mounting grip

VZBR10075

Tripod adapter

VZMINIARM

Compact medium-duty articulated arm

VZHDARM

Heavy duty articulated arm

VZMBA

Adapter plate set allows attachment of VariSlider Tripod Mount, SnapCrane or QuickJib to Mitchell mount tripods, risers, dollies, etc.

VZSCHARDCASE

Rolling hard case

VZQUICKJIBEXT

QuickJib extension kit

VZSNAPCRANE-EXT

Extension for SnapCrane12

VZSNAPCRANE9-EXT

Extension for SnapCrane9

VZCTD

DCR 100 Dolly combined with our TCR100 Tripod

Camera Sliders



CP Track Drive

- Standard length: 54" (extendable in 54" increments)
- Aluminum and Stainless Steel
- Capacity of 120 lbs upright, 40 lbs underslung
- Max speed: 4' per second
- Power requirement: 24VDC



VariSlider VSM1 Camera Slider

Our first camera slider makes no compromises in quality and draws on years of design experience in Hollywood feature production. Made in America using all high-quality components and first-rate workmanship, the VSM1 slider exceeds the design and performance standards of camera sliders in this price range by a substantial margin. This system is future-proof, as the modular construction lends itself to part replacement, upgrades, track extensions, and integration into more complex and higher capacity applications.

- Easily carries 100lbs
- 54" Track is extendable to any length
- Universal track mounting - tripod/underslung/tabletop
- Motorized and Motion Control options coming soon
- Works with most tripod heads - 75mm/100mm/Mitchell/Flat - other adapters available



VariSlider VSM1-C Camera Slider w/ 2 C-Stand / Low Boy Mounts

Our first camera slider makes no compromises in quality and draws on years of design experience in Hollywood feature production. Made in America using all high-quality components and first-rate workmanship, the VSM1 slider exceeds the design and performance standards of camera sliders in this price range by a substantial margin. This kit also includes 2 heavy duty C-Stand / Low Boy mounts (VS-CM) so you can mount it to any industry standard c-stand or low boy. This system is future-proof, as the modular construction lends itself to part replacement, upgrades, track extensions, and integration into more complex and higher capacity applications.

- Includes 2 heavy-duty mounts for c-stands & low boys w/ baby 5/8" spigots
- Easily carries 100lbs
- 54" track is extendable to any length
- Universal track mounting - tripod/underslung/tabletop
- Motorized and Motion Control options coming soon
- Works with most tripod heads - 75mm/100mm/Mitchell/Flat - other adapters available

Camera Sliders

VariSlider VSM1-K Camera Slider Kit

w/ 2 VZTK100AM Tripods & 2 Tripod Mounts (VS-TM2)



Our first camera slider makes no compromises in quality and draws on years of design experience in Hollywood feature production. Made in America using all high-quality components and first-rate workmanship, the VSM1 slider exceeds the design and performance standards of camera sliders in this price range by a substantial margin. This kit also includes 2 heavy duty tripod mounts (VS-TM2) and 2 high-capacity tripods (VZT100AM) so you can use it in a wide range of setups. This system is future-proof, as the modular construction lends itself to part replacement, upgrades, track extensions, and integration into more complex and higher capacity applications.

- Easily carries 100lbs
- 54" track is extendable to any length
- Universal track mounting - tripod/underslung/tabletop
- Motorized and Motion Control options coming soon
- Works with most tripod heads - 75mm/100mm/Mitchell/Flat - other adapters available

VariSlider VSM1-T Camera Slider Kit

w/ 2 Tripod Mounts (VS-TM2)



This is our most exciting new product in years for serious filmmakers and videographers. The first in a planned series of affordable ultra high-performance sliders, the VSM1-T spares no expense in quality of design or construction. This kit also includes a pair of heavy-duty tripod mounts (VS-TM2). Made in the USA from a completely original concept based on decades of motion picture equipment design experience, the VariSlider not only rolls more smoothly and consistently than anything close to its price, it carries extremely heavy loads effortlessly.

- Includes 2 heavy-duty mounts for 100mm/75mm/65mm/Flat base tripods
- Easily carries 100lbs
- Can attach to Mitchell tripod w/ optional VZMBA adapter plate
- 54" track is extendable to any length
- Universal track mounting - tripod/underslung/tabletop
- Motorized and Motion Control options coming soon
- Works with most tripod heads - 75mm/100mm/Mitchell/Flat - other adapters available

Slider Accessories

VS-CM C-Stand / Low Boy Adapter for VSM1-T & VSM1-K

Works with any c-stand or low boy w/ 5/8" baby spigot
Attaches to VSM1-T, VSM1-K on the tripod mount
Heavy-duty construction handles all camera payloads

VS-TM1 Single Tripod Mount for VariSlider VSM Series Camera Sliders

Works with most heavy-duty tripods - 65mm/75mm/100mm/Flat or Mitchell w/ optional VZMBA, or 150mm w/ optional adapter
Attaches to VSM1 outriggers
Includes hefty tie-down handknob
Heavy-duty construction handles all camera payloads

VS-TM2 pair of tripod mounts for VariSlider VSM series camera sliders

VS-TM2 Pair of Tripod Mounts for VariSlider VSM series camera sliders

Other products from our professional line:

Lens Controls

Tripods/Monopods

Camera Stabilizer Systems

Camera Support Systems

Monitors and Accessories

Batteries and Chargers

LED Lighting



www.VariZoom.com